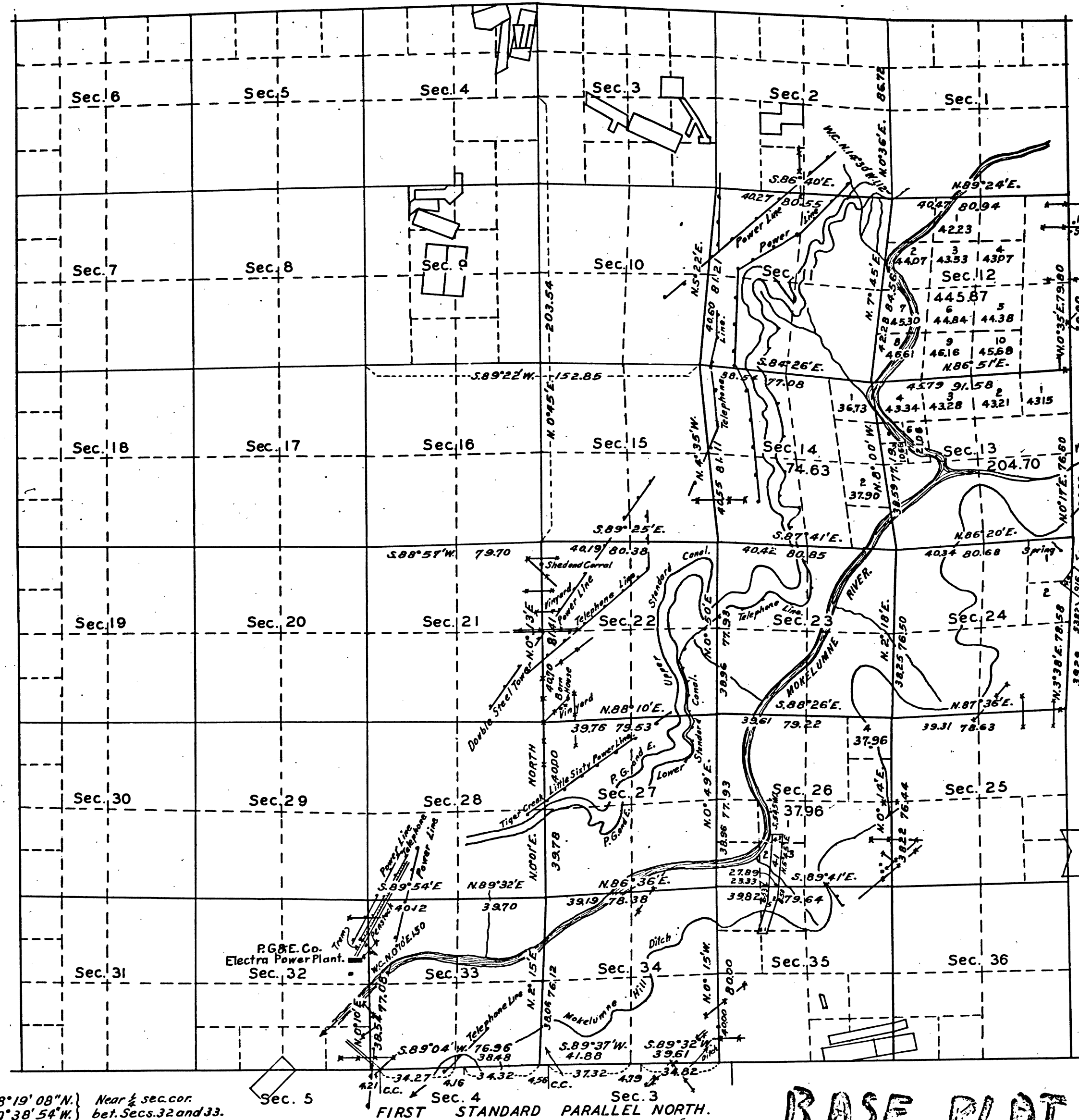


TOWNSHIP N° 6 NORTH, RANGE N° 12 EAST, MOUNT DIABLO MERIDIAN, CALIFORNIA.  
DEPENDENT RESURVEY OF SECTIONS 11, 12, 13, 14, 22, 23, 24, 26, 27, 33, AND 34.



This plat of the resurvey of Secs. 11, 12, 13, 14, 22, 23, 24, 26, 27, 33 and 34, T. 6 N., R. 12 E., M. 12 E., California, delineates a retracement and reestablishment of the lines of the original survey as shown upon the plat approved May 2, 1870, in their true original position according to the best available evidence of the position of the original corners; all differences between the measurements shown on the original plat and those derived in the retracement have been distributed proportionally between accepted corners in accordance with surveying rules; except where areas are shown hereon, reference will be made to the original plat for the showing of the areas and more detailed descriptions of the various smaller subdivisions. Authority for the resurvey is contained in letter 1415848 "E" dated May 26, 1931, approved by the Asst. Secretary, May 27, 1931.

Lat. 38°19'08"N. } Near 1/2 sec. cor.  
Long. 120°38'54"W. } bet. Secs. 32 and 33.

FIRST STANDARD PARALLEL NORTH.

BASE PLAT.

Scale: 40 Chains to an Inch.

Area resurveyed 7,093.16 Acres

LINES DESIGNATED	BY WHOM SURVEYED	GROUP		MILEAGE		WHEN SURVEYED	
		N°	DATE	MLS.	CHS.	BEGUN	COMPLETED
Exterior	Karl L. Siebecker	273	June 26, 1931.	4	73.43	Aug. 15, 1931	Oct. 17, 1931
Subdivisional	U.S. Surveyor.	"	"	25	74.54	" 21, "	" 26, "
Miscellaneous	"	"	"	6	72.16	" 15, "	" 26, "

Office of U.S. Supervisor of Surveys

Denver, Colorado, March 21, 1932

The above plat of the dependent resurvey of Sections 11, 12, 13, 14, 22, 23, 24, 26, 27, 33 and 34, Township No. 6 North, Range No. 12 East, of the Mount Diablo Meridian, California, is strictly conformable to the field notes of the survey thereof which have been examined and approved.

*Wm. H. Johnson*  
U.S. Supervisor of Surveys.

DEPARTMENT OF THE INTERIOR  
GENERAL LAND OFFICE

Washington, D.C., August 29, 1932.

The resurvey represented by this plat having been correctly executed in accordance with the requirements of law and the regulations of this office, is hereby accepted.

*J. H. Cannon*  
Acting Assistant Commissioner.

41 505 - BASE T6N R12E MD.

BLM 253