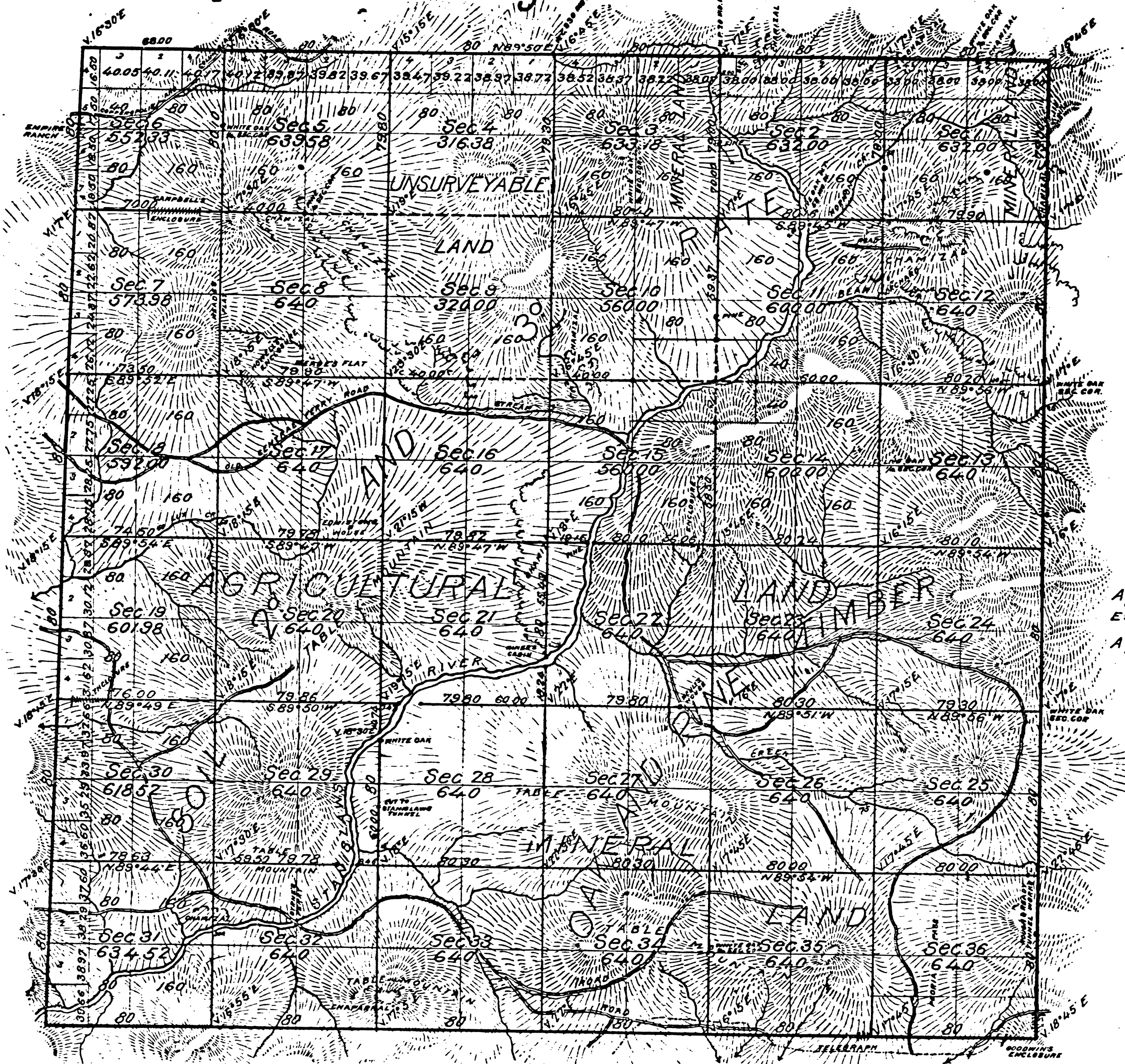


Township N°1 North, Range N°13 East, Mount Diablo Meridian.



Aggregate Area of Public Land 21866.47 Acres
 Estimated - unsurveyed Mountain Land 880.00
 Aggregate 22746.47

DEPARTMENT OF THE INTERIOR,
 GENERAL LAND OFFICE,
 Washington, D. C. *Rept. 14,190*
 I hereby certify that this is a true copy
 of the plat of official survey of the lands
 to which it relates, on file in this office.

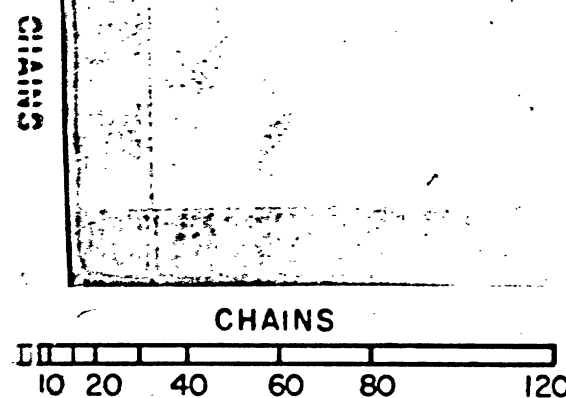
H. A. S. [Signature]
 Recorder, General Land Office.

Surveys Designated	By whom Surveyed	Date of Contract.	Amount of Surveys	When Surveyed
South boundary of Township	A. W. Van Schmidt	May 30 th 1855		1855
Township lines colored red	Fleming Amyx	September 30 th 1858		1859
Rest of Township lines	A. B. Beauvais	August 27 th 1869	11 mts 57chs 00 lks	1869
Section lines			56 - 27 - 74 -	November 25 th 1869

The above Map of Township N°1 North, Range N°13 East, Mount Diablo Meridian
 is strictly conformable to the field notes of the Surveys thereof, on file in this Office
 which have been examined and approved
 Surveyor General's Office
 San Francisco California
 February 18th 1871.

41 023

L. R. Hardenbergh
 Surv. Gen. Cal.



BLM 8