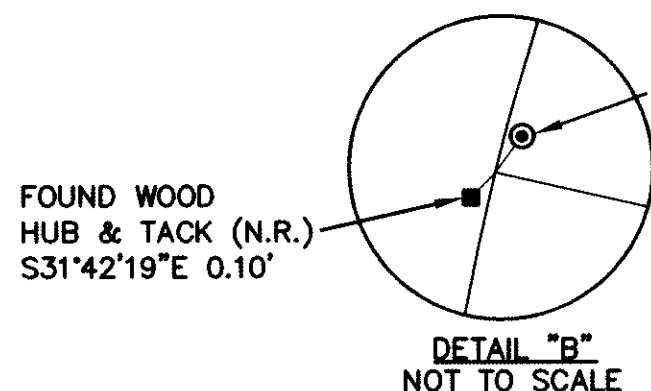
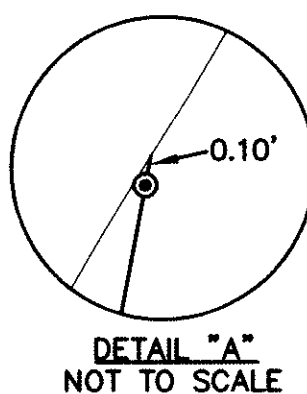


BASIS OF BEARINGS

THE CALCULATED BEARING OF N65°28'00"W BETWEEN FOUND MONUMENTS ON EDGEWOOD DRIVE AS SHOWN ON "CRESCENT PARK MAP NO. 2, CITY OF PALO ALTO, SANTA CLARA COUNTY, CALIFORNIA" FILED IN BOOK X OF MAPS AT PAGES 26 AND 27, SANTA CLARA COUNTY RECORDS, WAS USED AS THE BASIS OF ALL BEARINGS SHOWN UPON THIS MAP.



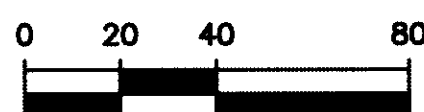
REFERENCES

- ① X MAPS 26-27
- ② DOC. 18382774
- ③ DOC. 22062861
- ④ DOC. 12540520
- ⑤ 1168 O.R. 410
- ⑥ CORNER RECORD 1884
- ⑦ CORNER RECORD 1318

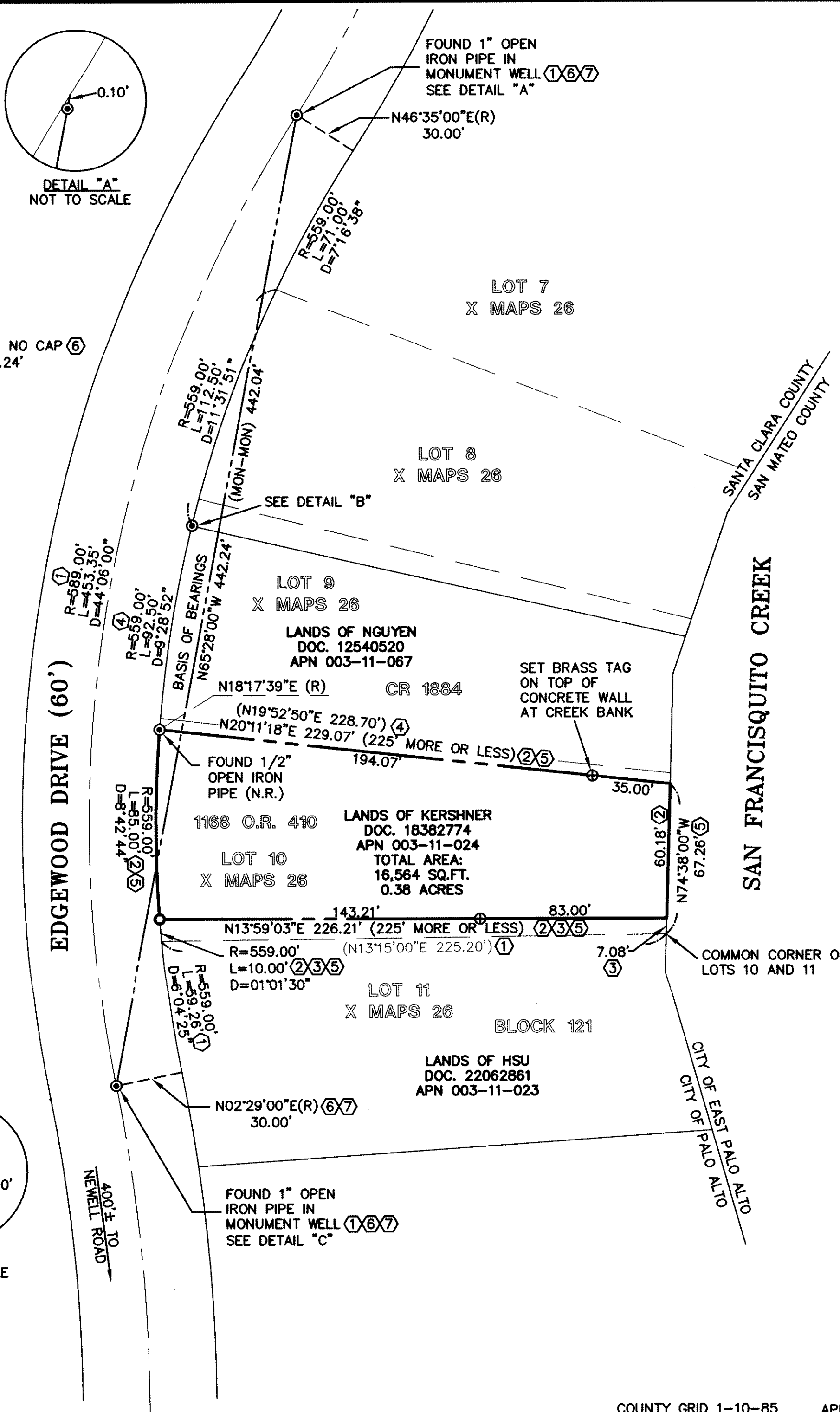
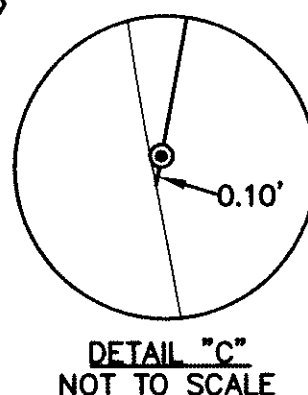
LEGEND

- ⊙ FOUND MONUMENT AS NOTED
- SET 3/4" IRON PIPE W/ PLASTIC PLUG & TACK, LS 9023
- ⊕ SET NAIL & BRASS TAG, LS 9023
- () INDICATES RECORD DATA
- I.P. IRON PIPE
- N.R. NO RECORD
- ⬡ REFERENCE MAP OR DOCUMENT
- (R) RADIAL BEARING

BOUNDARY LINE
PROPERTY LINE
CENTER LINE
ORIGINAL LOT LINE PER ①



SCALE: 1" = 40'



RECORDER'S STATEMENT

FILED THIS 24th DAY OF February, 2017, AT 11:10 A.M.
IN BOOK 902 OF MAPS AT PAGE 14, AT THE
REQUEST OF LEA AND BRAZE ENGINEERING, INC.
FILE NO: 23588848 FEE: \$8.00

REGINA ALCOMENDRAS, COUNTY RECORDER

BY: Deputy
DEPUTY

COUNTY SURVEYOR'S STATEMENT

THIS MAP HAS BEEN EXAMINED IN ACCORDANCE WITH SECTION 8766 OF THE PROFESSIONAL LAND SURVEYORS' ACT THIS 22nd DAY OF February, 2017.

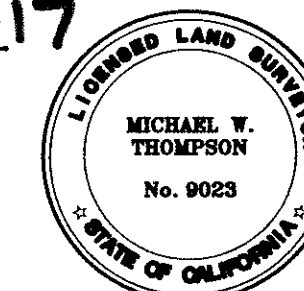
WILLIAM F. SLEPNIKOFF, COUNTY SURVEYOR
PLS NO. 5701



SURVEYOR'S STATEMENT

THIS MAP CORRECTLY REPRESENTS A SURVEY MADE BY ME OR UNDER MY DIRECTION IN CONFORMANCE WITH THE REQUIREMENTS OF THE PROFESSIONAL LAND SURVEYORS' ACT AT THE REQUEST OF JANE KERSHNER IN NOVEMBER 2016.

Michael W. Thompson 2-3-17
MICHAEL W. THOMPSON DATE



NOTES

1. THIS SURVEY IS BEING FILED PER THE MANDATORY FILING PROVISIONS OF SECTION 8762(b)(4)(5) OF THE PROFESSIONAL LAND SURVEYORS' ACT.
2. ALL DISTANCES ARE IN FEET AND DECIMALS THEREOF.

RECORD OF SURVEY

OF THE LANDS OF KERSHNER AS DESCRIBED IN THAT CERTAIN GRANT DEED RECORDED MAY 20, 2005, IN DOCUMENT NO. 18382774, SANTA CLARA COUNTY RECORDS, BEING A PORTION OF LOT 10, BLOCK 121, X MAPS 26 SANTA CLARA COUNTY RECORDS.

PALO ALTO
1" = 40'

SANTA CLARA COUNTY

CALIFORNIA
DECEMBER 2016



LEA & BRAZE ENGINEERING, INC.

CIVIL ENGINEERS • LAND SURVEYORS

2495 INDUSTRIAL PARKWAY WEST
HAYWARD, CALIFORNIA 94545
(510) 887-4086
FAX (510) 887-3019
WWW.LEABRAZE.COM

COUNTY GRID 1-10-85

APN: 003-11-024

SHEET 1 OF 1

JOB #2161048

23588848

14