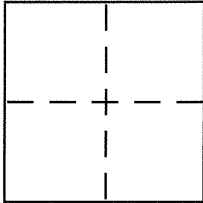


CORNER RECORD

City of BERKELEY Document Number B/L 36 Pg 75 CR 4099
County of ALAMEDA, California
Brief Legal Description CITY OF BERKELEY MONUMENT B0482



CORNER TYPE

Government Corner ☐ Control ☒
Meander ☐ Property ☐
Rancho ☐ Other ☐
Date of Survey 2-2-2010

COORDINATES (Optional)

N. _____
E. _____
Zone _____ NAD27 ☐ NAD83 ☐
NAD83 Epoch _____
Elev. _____
Vert. Datum: NGVD29 ☐ NAVD88 ☐
Meas. Units: Metric ☐ Imperial ☐

Corner - Left as found ☒ Found and tagged ☐ Established ☐ Reestablished ☐ Rebuilt ☐

Identification and type of corner found: Evidence used to identify or procedure used to establish or reestablish the corner: LAND
IN COMPLIANCE WITH SECTION 6771 OF THE PROFESSIONAL SURVEYORS'
ACT, THIS CORNER RECORD IS BEING FILED TO ESTABLISH THE POSITION
OF AN EXISTING MONUMENT PRIOR TO SEWER RECONSTRUCTION
(SEE PAGE 2)

A description of the physical condition of the monument as found and as set or reset: CITY OF BERKELEY STANDARD WELL TYPE MONUMENT, FOUND
IN GOOD CONDITION.
(SEE PAGE 2)

SURVEYOR'S STATEMENT

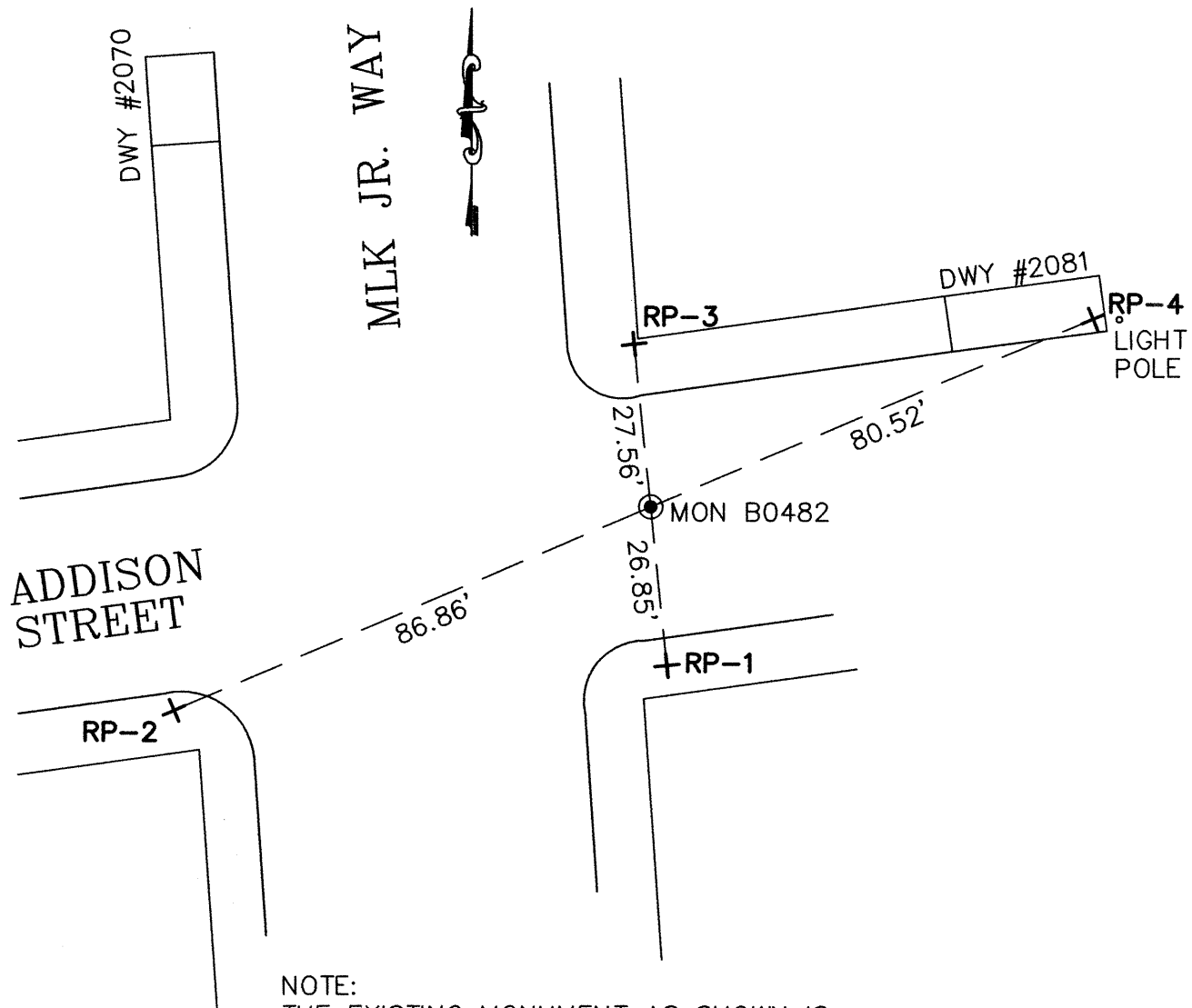
This Corner Record was prepared by me or under my direction in conformance with
the Land Surveyor's Act on FEBRUARY 2 2010
Signed [Signature] P.L.S. or R.C.E. No. 5003

COUNTY SURVEYOR'S STATEMENT

This Corner Record was received 3-4-2010
and examined and filed 4-2-2010
Signed [Signature] P.L.S. or R.C.E. No. 5726
Title COUNTY SURVEYOR

County Surveyor's Comment _____





NOTE:
THE EXISTING MONUMENT AS SHOWN IS
REFERENCED BY STRAIGHT LINES BETWEEN RP-1
TO RP-3 AND RP-2 TO RP-4.

LEGEND

● STANDARD WELL-TYPE CITY
MONUMENT WITH 1/2" PIN,
NO ELEVATION

+ REFERENCE CROSS ON SIDEWALK