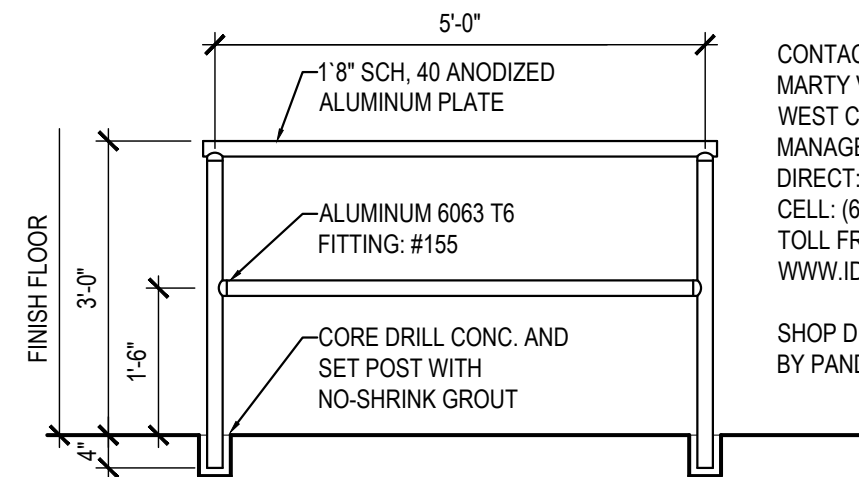


OUTDOOR FURNITURE & ARCH. ELEMENTS				
OC1	OUTDOOR CHAIR		PANDA VENDOR	22-7/8" x 22-1/2" x 35-3/8" / (17-3/8")
OT1	4 TOP OUTDOOR TABLE		PANDA VENDOR	48" x 24 1/2" 30"
OT2	4 TOP OUTDOOR TABLE (ADA)		PANDA VENDOR	48" x 24 1/2" 30"
OT3	2 TOP OUTDOOR TABLE		PANDA VENDOR	24" x 24 1/2" 30"
OW1	OUTDOOR WASTE BIN		PANDA VENDOR	23" x 23-1/4" x 44-5/8"
OW2	OUTDOOR WASTE BIN	ALUMINUM	PANDA VENDOR	22-1/2" x 22-1/2" x 45"
F5a	UMBRELLA & BASE (6)	TOP: KUNRELLA, CANVAS JOCKEY RED POLE: ALUM. MARINE SATIN ANODIZED BASE: 24" DIA. 15/16 GALV. STEEL BASE	TUJICI	6' SQ. x 96" H
F5b	SINGLE POST PYRAMID UMBRELLA (12)	TOP: FABRIC TOP, PVC 502 FERRARI PRECONTRACTANT POLE: BLK. 5" O.D. TPO TUBING BASE: 6" SQ. GALV. ON CONC. FOOTING. SEE DETAIL	USA SHADE	12' SQ. x 10' 5-12"/H



CONTACT:
MARTY VENEGAS
WEST COAST DISTRIBUTION
MANAGER
DIRECT: (480) 380-2100
CELL: (602) 330-6390
TOLL FREE: (800) 731-1722
WWW.IDEALSHIELD.COM

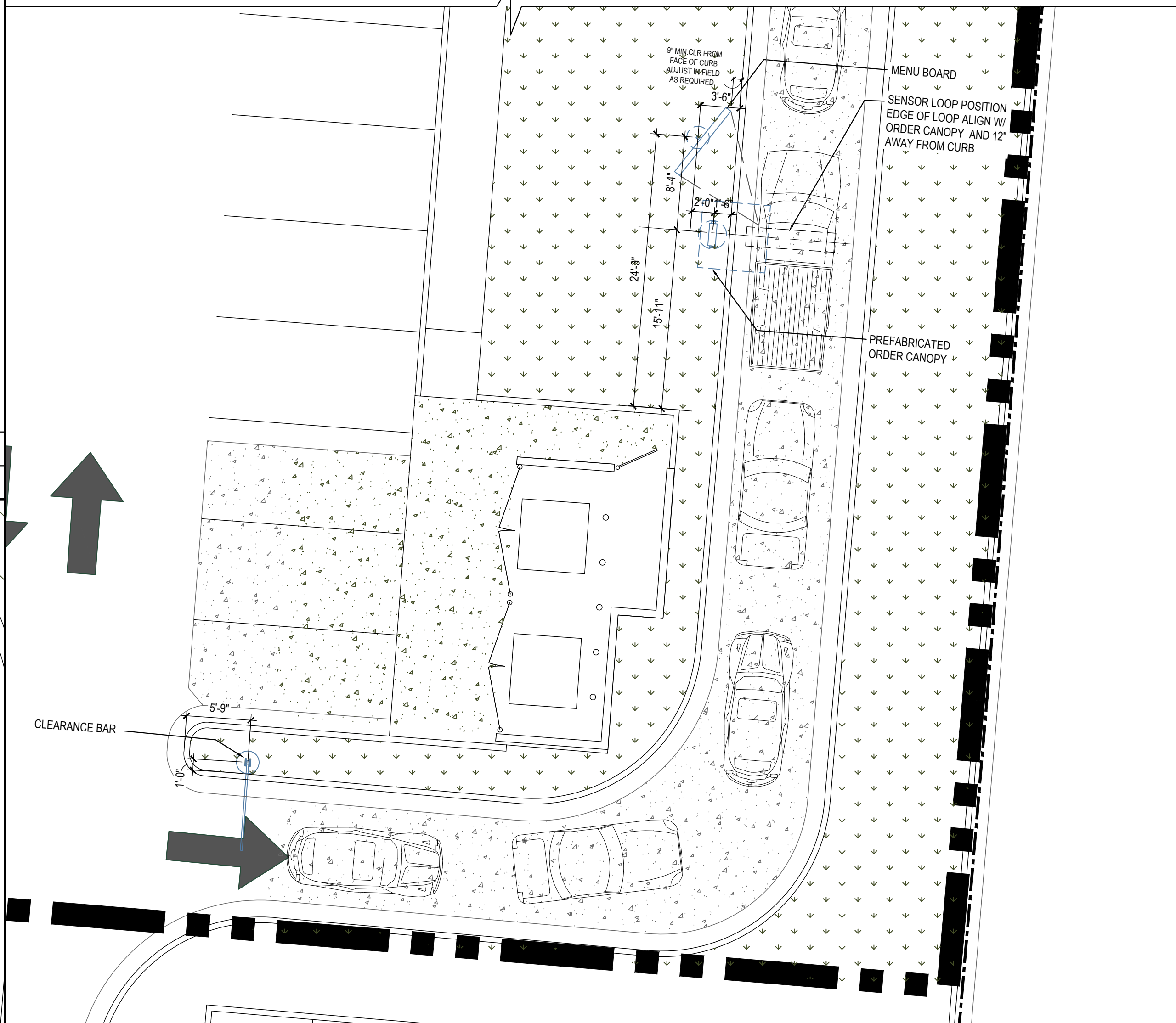
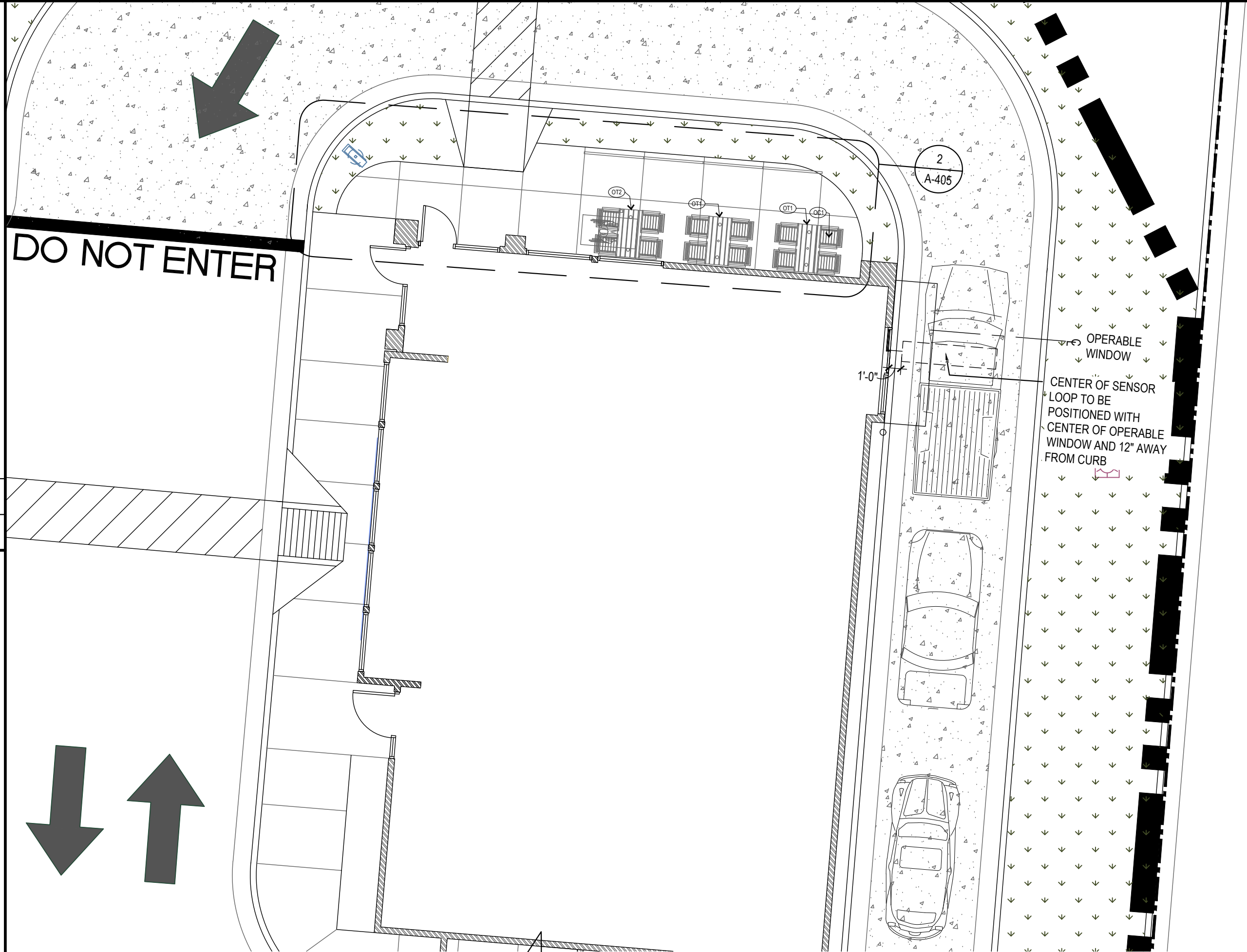
SHOP DRAWINGS TO BE REVIEWED
BY PANDA DESIGNER

APPLICABLE RAILING AREAS:

1. PATIO IS ADJACENT TO DRIVE AISLE OR DRIVE THRU LANE WITHOUT ANY LANDSCAPE BUFFER.
2. PATIO AREA AND ADJACENT GRADES ARE MORE THAN 6" DIFFERENCE IN HEIGHT.
3. PROJECT THAT REQUIRES ADA ACCESSIBLE RAMP AND RAILING

RAILING ELEVATION DETAIL	4
--------------------------	---

Scale= 1/2" = 1'-0"



PATIO FURNITURE	2
-----------------	---

Scale= 1/4" = 1'-0"

DRIVE - THRU MENU BOARD LOCATION	1
----------------------------------	---

Scale= 1/8" = 1'-0"



PANDA EXPRESS, INC.
1683 Walnut Grove Ave.
Rosemead, California
91770

Telephone: 626.799.9898
Facsimile: 626.372.8288

All ideas, designs, arrangement and plans indicated or represented by this drawing are the property of Panda Express Inc. and were created for use on this specific project. None of these ideas, designs, arrangements or plans may be used by or disclosed to any person, firm, or corporation without the written permission of Panda Express Inc.

REVISIONS:

[illegible]

ISSUE DATE:

1st	PERMIT/BID SET	01-13-20

DRAWN BY:

PANDA PROJECT #: S8-20-D6790
ARCH PROJECT #: 18044.035



8813 Penrose Lane, Suite 400,
Lenexa, KS 66219
ph: 913.649.8181 • fx: 913.649.1275

PANDA EXPRESS

TRUE WARM & WELCOME 2300
CANAL ST. & WINCHESTER BLVD
CANAL-WINCHESTER, OH 43110

A-405

ARCHITECTURAL DETAILS

DRIVE THRU

TRUE WARM & WELCOME 2300 R1

PERMIT/BID SET 01-13-20