



PANDA RESTAURANT GROUP INC.
1683 Walnut Grove Ave.
Rosemead, California
91770
Telephone: 626.799.9898
Facsimile: 626.372.6288

All ideas, designs, arrangement and plans indicated or represented by this drawing are the property of Panda Express Inc. and were created for use on this specific project. None of these ideas, designs, arrangements or plans may be used by or disclosed to any person, firm, or corporation without the written permission of Panda Express Inc.

| | | |
|------------|--|--|
| REVISIONS: | | |
| | | |
| | | |
| | | |
| | | |
| | | |
| | | |
| | | |

| | | |
|-------------|------------------|----------|
| ISSUE DATE: | | |
| 1st | ISSUE FOR PERMIT | 01-11-17 |
| | | |
| | | |
| | | |
| | | |
| | | |

| | | |
|--------------|--|--|
| DRAWN BY: RR | | |
| | | |
| | | |
| | | |
| | | |
| | | |

PANDA PROJECT #: S8-17-D5197
ARCH PROJECT #: 1701

Project No.
PE1701

**Kurzynske
& Associates**
CONSULTING ENGINEERS
2900 Lebanon Pike
Suite 201
Nashville, Tennessee 37214

MARK T. KURZYNSKE
FLORIDA LICENSE # 53568

01/11/17

PANDA EXPRESS
HIGHWAY 90 AT SHADOW OAK DRIVE
4890 HIGHWAY 90
PACE (MILTON), FL 32571

2200 TRUE WARM & WELCOME

E-104

ROOF POWER PLAN

- ALL ROOF MOUNTED EQUIPMENT SHALL BE IN NEMA-3R ENCLOSURES.
- ALL CONDUIT RUNS SHOWN ON THE ROOF SHALL BE RUN BELOW THE CEILING SPACE WHERE AMBIENT TEMPERATURE WILL BE BELOW 30° C. FINAL CONNECTIONS TO THE ROOF EQUIPMENT ARE LIMITED TO 5'-0" FOR DIRECT SOLAR EXPOSURE.
- NOT USED.
- VERIFY ALL FUSE SIZES AND TYPES WITH THE AIR CONDITIONING EQUIPMENT MANUFACTURER PRIOR TO INSTALLATION.
- REVIEW THE MECHANICAL PLANS FOR THE AIR CONDITIONING CONTROL REQUIREMENTS AND SCOPE OF WORK PRIOR TO BIDDING AND INCLUDE ALL COSTS IN BID.
- VERIFY CONNECTION POINTS OF ALL HVAC EQUIPMENT PRIOR TO INSTALLATION. PROVIDE CONTROL VOLTAGE CONNECTION TO DUCT MTD. SMOKE DETECTOR AS REQUIRED BY MECHANICAL DRAWING M-100.
- SEE MECHANICAL DRAWINGS FOR EXACT LOCATIONS OF MECHANICAL EQUIPMENT AND THERMOSTATS. PROVIDE RACEWAY SYSTEM FOR ALL CONTROL WIRING AS REQUIRED BY MECHANICAL DRAWING M-100.
- G.C. COORDINATE ELECTRICAL, MECHANICAL, FIRE ALARM (IF REQUIRED) FOR INTERLOCK SEQUENCE.
- NOT USED.

ROOF PLAN GENERAL NOTES2

NOT TO SCALEE-104

- ROUTE HOMERUN THROUGH BACK OF HOUSE LIGHTING CIRCUIT. REFER TO LIGHTING PLAN, SHEET 1 / E-101. FAN TO BE CONTROLLED BY SWITCH FOR BACK OF HOUSE LIGHTING.
- 120VAC DUCT-MOUNTED SMOKE DETECTOR - LOCATION PER MECHANICAL. CONFIGURE FOR HVAC SYSTEM UNIT SHUT-DOWN.
- ROUTE CIRCUITRY THROUGH HOOD CONTROL PANEL 'M4'. REFER TO DETAIL, SHEET 3 / E-401.
- REFER TO CONDENSING UNIT WIRING DIAGRAM, SHEET 7 / E-400.
- STRUT RACK SUPPORT FOR EQUIPMENT DISCONNECT SWITCHES. REFER TO DETAIL, SHEET 2 / E-401.
- PROVIDE AND INSTALL 2-1/2" DIA GALVANIZED RIGID METAL CONDUIT AND WEATHERHEAD AS SHOWN. CONDUIT TO BE STRAPPED TO CLOSEST JOIST TO THE MANAGER'S STATION (FULL DEPTH).
- DO NOT INSTALL UNTIL BACK DRAFT DAMPER INSTALLATION IS COMPLETE. UTILIZE FACTORY KNOCKOUTS FOR ELECTRICAL RUN FOR THIS FAN. REFER TO SHEET M-401.
- MOUNT PHOTOCELL AS DETAILED ON SHEET 11-E400 ON CONDENSER RACK.
- STUB ELECTRICAL FEED FOR EF-1 □ EF-2, THROUGH ROOF ON HINGE SIDE OF EXHAUST FANS, IN LOCATION AS SHOWN ON POWER ROOF PLAN. REFER TO DETAIL 3/M-501 FOR ADDITIONAL DETAILS.

Ⓢ ROOF PLAN KEYED NOTES3

NOT TO SCALEE-104

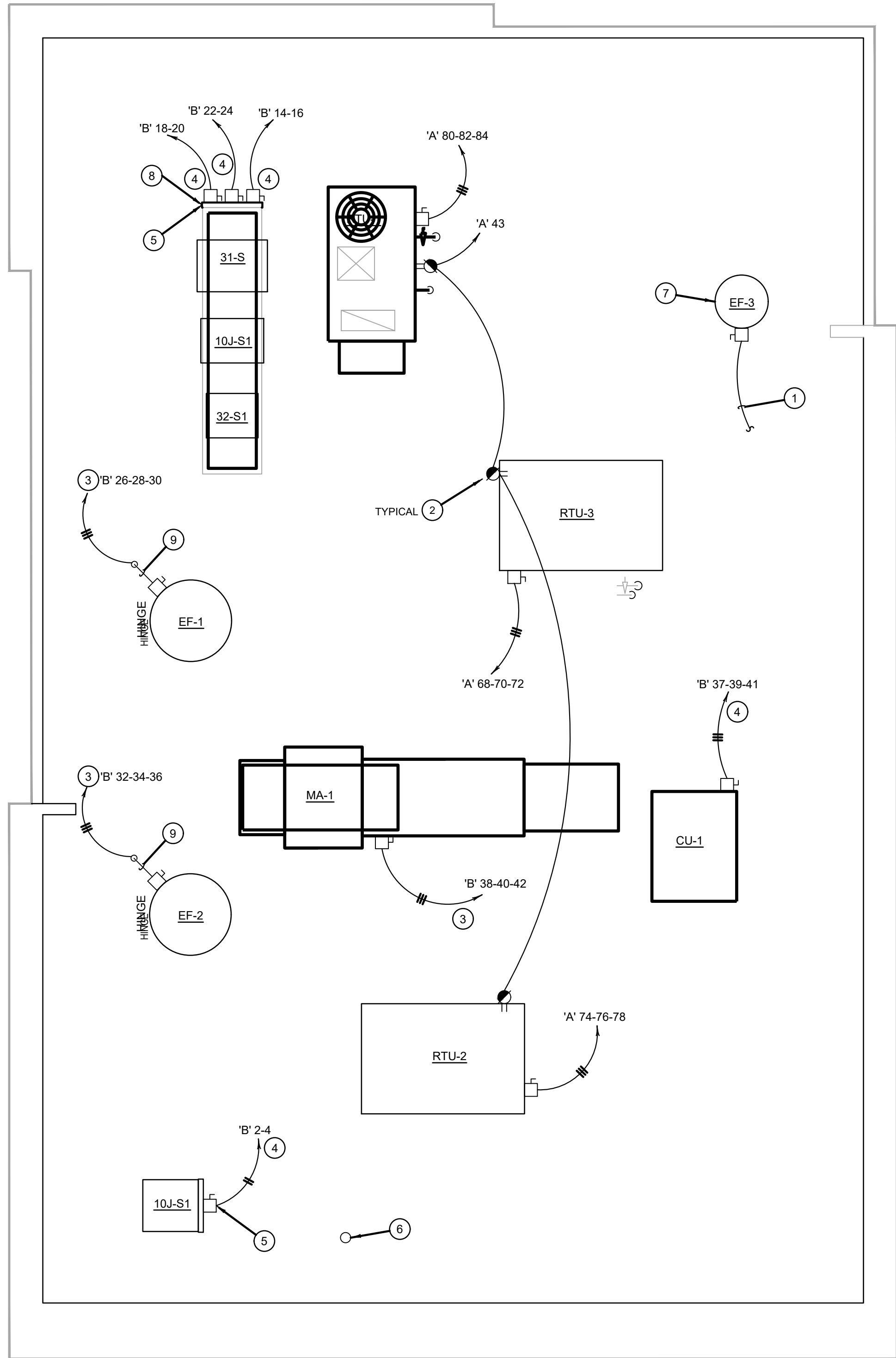
| ROOFTOP EQUIPMENT SCHEDULE | | | | | | | | | | |
|----------------------------|-------------------|----|------|------|---------|--------------------------|-------|--------------|--|--|
| TAG | DESCRIPTION | KW | H.P. | FLA | VOLT/Ø | WIRE, CONDUIT | CONN. | MOUNT HEIGHT | DISC. SW. WITH RK1 FUSES PER MFR'S REQ'S. AND/OR REMARKS | |
| AC-1 | A/C UNIT (5 TON) | | | 33.0 | 208V.3Ø | 3 #6, #10 GND., 1" C. | □ | AT UNIT | 60A. 3P. 3F. WP (1)(4) | |
| AC-2 | A/C UNIT (10 TON) | | | 43.0 | 208V.3Ø | 3 #6, #10 GND., 1" C. | □ | AT UNIT | 60A. 3P. 3F. WP (1)(4) | |
| AC-3 | A/C UNIT (10 TON) | | | 43.0 | 208V.3Ø | 3 #6, #10 GND., 1" C. | □ | AT UNIT | 60A. 3P. 3F. WP (1)(4) | |
| CU-1 | CONDENSING UNIT | | | 40.6 | 208V.3Ø | 3 #4, #8 GND., 1-1/4" C. | □ | AT UNIT | 60A. 3P. 3F. WP (1) | |
| MA-1 | MAKE-UP AIR UNIT | | | | | | | | | |
| | | | | | | | | | | |
| EF-1 | EXHAUST FAN | | | | | | | | | |
| EF-2 | EXHAUST FAN | | | | | | | | | |
| EF-3 | EXHAUST FAN | | | | | | | | | |
| | | | | | | | | | | |
| | | | | | | | | | | |
| 31c | W/I COOLER COND. | | | | | | | | | |
| 32c | W/I FREEZER COND. | | | | | | | | | |
| 10J-S1 | ICE MACHINE COND. | | | | | | | | | |

- ① DISCONNECT SWITCH PROVIDED WITH UNIT.
- ② COMBINATION 30A. 2P. 2F. WP DISCONNECT SWITCH WITH RK5 FUSES PER MANUFACTURER RECOMMENDATION.
- ③ COMBINE CIRCUITRY IN 1" CONDUIT FROM J-BOX ON EQUIPMENT DISCONNECT SWITCH SUPPORT. REFER TO DETAIL THIS SHEET, 1 / E-104.
- ④ ELECTRICAL FEEDS ARE TO BE ROUTED FROM PLENUM SPACE, UP THROUGH EQUIPMENT CURB, INTO BOTTOM OF EQUIPMENT, THROUGH FACTORY INSTALLED WATER TIGHT CONNECTIONS.

HVAC EQUIPMENT SCHEDULE4

NOT TO SCALEE-104

NOTE:
CONVENIENT RECEPTACLES WILL BE
FACTORY INSTALLED ON RTU'S UNITS
AND POWERED VIA CIRCUIT B-29.



ROOF POWER PLAN1

1/4" = 1'-0"E-104