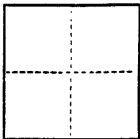


CORNER RECORD

CR 256

COUNTY OF Alameda T. 3S R. 2W Mt. Diablo MERIDIAN CALIFORNIA  
CORNER TYPE: GOV'T. CORNER ☐ MEANDER ☐ RANCHO ☐ CONTROL ☐ OTHER ☒  
CORNER IDENTIFICATION — DATE OF VISIT May 5 19 92



CORNER — LEFT AS FOUND ☐ FOUND AND TAGGED ☐ REESTABLISHED OBLITERATED CORNER ☒ REBUILT ☐

PHYSICAL DESCRIPTION OF CORNER FOUND; EVIDENCE AND METHOD USED TO IDENTIFY OR REESTABLISH

From County field notes, LL 544-56, reference points were matched up with found points used to re-establish tract monuments along Grove Way. Monuments referenced were destroyed as per improvement plans "A 544-8".

PHYSICAL DESCRIPTION OF MONUMENTS REBUILT OR PERPETUATED Legend

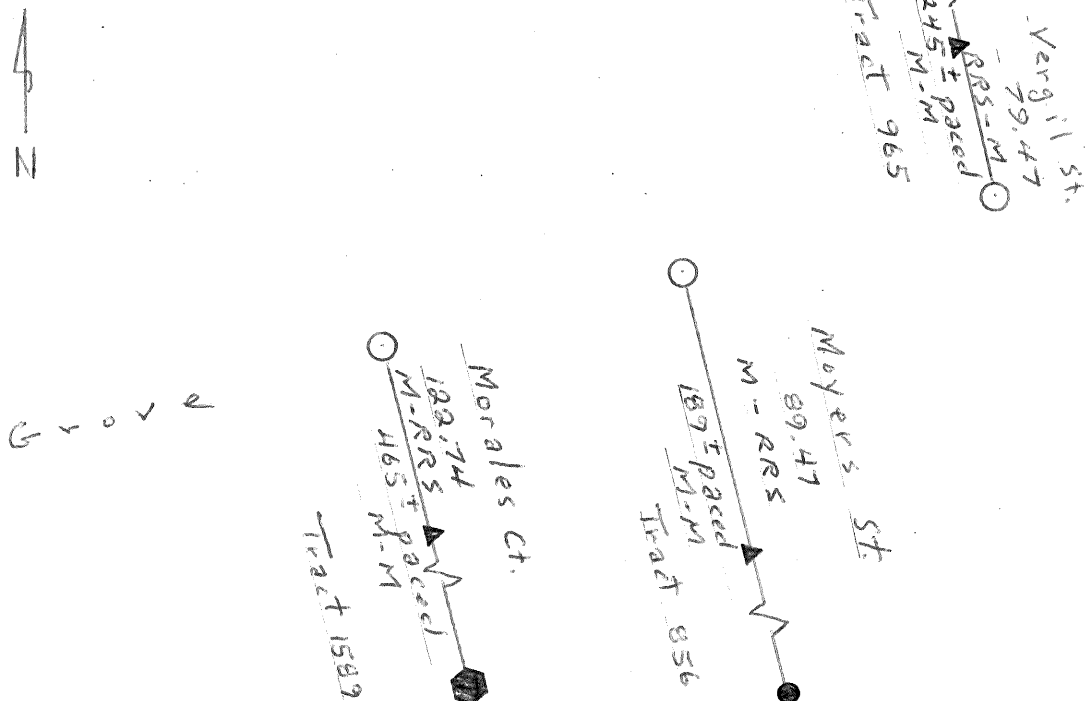
- Set standard Alameda County discs (SD-601) in concrete within iron casings. Discs have raised nipples and are stamped 1992.
- Found hex bolt in concrete within iron casing.
- Found brass pin in concrete within iron casing.
- ▲ Found railroad spike.

CALIFORNIA COORDINATE SYSTEM ORDER: FIRST ☐ SECOND ☐ THIRD ☐  
STATIONS USED: NGS (USC & GS) ☐ STATE ☐ COUNTY ☐ OTHER ☐ STATION \_\_\_\_\_ STATION \_\_\_\_\_  
ZONE \_\_\_\_\_ ELEVATION \_\_\_\_\_ NORTHINGS (Y) \_\_\_\_\_ EASTINGS (X) \_\_\_\_\_

(Fold)

SKETCH: (Include reference tie or witness points, remarks and topo of area)

Note: Discs were set by double centering from found RPs.



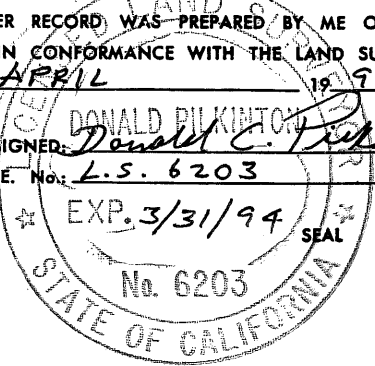
SURVEYOR'S CERTIFICATE

THIS CORNER RECORD WAS PREPARED BY ME OR UNDER MY DIRECTION IN CONFORMANCE WITH THE LAND SURVEYORS ACT ON 8 APRIL 19 93

SIGNED: Donald C. Fickler

L.S. or R.C.E. No: L.S. 6203

EXP. 3/31/94



COUNTY SURVEYOR'S CERTIFICATE

THE CORNER RECORD WAS RECEIVED 02/02 19 93 AND EXAMINED AND FILED 14/12 19 93

BY: Deputy County Surveyor

DOCUMENT NO. 93-44

STATEMENT ON BACK OF SHEET Bk 2 CR Pg 76  
LS5726

YES ☐ NO ☒

