

	TANK WATER CLOSET (HANDICAPPED): AMERICAN STANDARD 2487.016, FLUSH TANK WITH TRIP LEVER ON OPEN SIDE OF TOILET. FLOOR MOUNTED STANDARD WHITE FINISHED ELONGATED FRONT BOWL. PRESSURE ASSISTED 1.6 G.P. RIM 16 1/2" A.F.F. AM. STD. 1142.600 TANK COVER LOCKING DEVICE AM. STD. 5901.100 020 OPEN FRONT SEAT LESS COVER
B	LAVATORY: ZURN MODEL Z3344, 20"x18" WALL HUNG LAVATORY, VITREOUS CHINA, WITH 4" CENTER FAUCET HOLES & ZURN Z-1231 CONCEALED ARM CARRIER. FAUCET: TOTO TOTO L01-010ET STANDARD ECOPOWER FAUCET. SENSOR, 1.0 GPM, 0.18gpc, 4" COVER PLATE #P31588PC. THERMOSTATIC MIXING VALVE: TOTO TL1TOR. PROVIDED & INSTALLED BY CONTRACTOR CONTACT CHRISTINE MCALLEXANDER 800-459-7099 PANDARG@HJCINC.COM
C	FLOOR DRAIN: ZURN N ZB415-B5 CAST IRON DRAIN WITH 5" ROUND POLISHED BRONZE TOP. MEMBRANE FLASHING CLAMP. PROVIDE 3" OUTLET WITH P-TRAP. CLEAN AND POLISH AFTER INSTALLATION. PROVIDE PROSET TRAP GUARD® PRIMER FOR FLOOR DRAIN.
D	FLOOR DRAIN: ZURN N ZB415-B5 CAST IRON DRAIN WITH 5" ROUND POLISHED BRONZE TOP. MEMBRANE FLASHING CLAMP. PROVIDE 3" OUTLET WITH P-TRAP. CLEAN AND POLISH AFTER INSTALLATION. REFER TO DETAIL 17/P-500. PROVIDE TRAP PRIMER
D1	FLOOR DRAIN: ZURN N ZB415-B5 CAST IRON DRAIN WITH 5" ROUND POLISHED BRONZE TOP. MEMBRANE FLASHING CLAMP. PROVIDE 3" OUTLET WITH P-TRAP. CLEAN AND POLISH AFTER INSTALLATION. REFER TO DETAIL 19/P-500. PROVIDE TRAP PRIMER
E	FLOOR SINK: ZURN N Z1901-3, RECEPTOR WITH 12" SQUARE TOP x 8" DEEP CAST IRON BODY WITH ACID-RESISTING ENAMEL INTERIOR. RECEPTOR PROVIDED WITH ALUMINUM DOME STRAINER WITHOUT GRATE.
E1	FLOOR SINK: ZURN N Z1901-2-32, RECEPTOR WITH 12" SQUARE TOP x 8" DEEP CAST IRON BODY WITH ACID-RESISTING ENAMEL INTERIOR. RECEPTOR PROVIDED WITH PORCELAIN ENAMEL LOOSE-SEAT 1/2 GRATE AND ALUMINUM DOME STRAINER.
F	NOT USED
G	FLOOR DRAIN WITH FUNNEL: ZURN N ZB415-4 ACID RESISTING EPOXY COATED CAST IRON DRAIN WITH 5" ROUND POLISHED BRONZE TOP. 4" FUNNEL. PROVIDE 2" OUTLET WITH P-TRAP. CLEAN AND POLISH AFTER INSTALLATION. REFER TO DETAIL. PROVIDE TRAP PRIMER
H	NOT USED
I	GREASE INTERCEPTOR: SCHIER GREASE INTERCEPTOR 250 GALLONS MODEL GB-250 OR EQUAL, RATED AT 200 GPM FLOW RATE, 1,196 LBS GREASE CAPACITY WITH 150 GPM FLOW CAPACITY. INSTALL BELOW GRADE PER MANUFACTURER'S INSTRUCTIONS W/ CONCRETE SLAB FOR TRAFFIC LOADING.
J	WATER HAMMER ARRESTER: J. R. SMITH #5020, 1" NIPPLE OR EQUAL
K	PROVIDE ZURN 3755T STAINLESS STEEL REDUCED PRESSURE PRINCIPLE ASSEMBLY AT BAG-N-BOX. REFER TO 15/P-500
L	HOSE BIBB: ACORN #8121 WITH VACUUM BREAKER, CHROME PLATED.
L1	HOSE BIBB: WOODFORD MB65 FREEZELESS COMMERCIAL CONCEALED BOX TYPE WALL HYDRANT IN SECURE LOCK STYLE MODULAR BOX. SINGLE CHECK ANTI SIPHON VACUUM BREAKER. CHROME HEND. BRASS VALVE BODY HYDRANT WITH 3/4" HOSE CONNECTION 18" A.F.F.
M	TRENCH DRAIN: ZURN ZD-886-RFS, 8" WIDE x 80" LONG, TRENCH DRAIN SYSTEM. MODULAR CHANNEL SECTIONS SHALL BE MADE OF HIGH DENSITY POLYETHYLENE WITH INTERLOCK ENDS, A RADIUS BOTTOM AND REINFORCED STAINLESS STEEL SLOTTED GRATE.
M1	TRENCH DRAIN: ZURN ZD-664, 6" WIDE X 12" LONG, TRENCH DRAIN SYSTEM. PROVIDE ONE BOTTOM OUTLET MODULE AND ONE EXTENSION MODULE WITH INTERLOCK ENDS. SLOTTED HEEL-PROOF GRATE.
N	PROVIDE WATTS SD-3 DUAL CHECK VALVE WITH ATMOSPHERIC PORT AND STRAINER AFTER EACH BV.
O	FREEZE PROOF ROOF HYDRANT: WOODFORD MODEL: SRH-MS
P1	MOP SINK: GSW # SE2424FM 24"x24" STAINLESS STEEL UNIT, 18 GA. STAINLESS STEEL CHICAGO FAUCET #897 WITH INTEGRAL STOPS IN SHANKS. WALL BRACE. HOSE THREADS, PAIL HOOK, VACUUM BREAKER, ROUGH BRASS FINISH; THREE FOOT RUBBER HOSE, 3" TRAPPED AND VENTED WASTE CONNECTION. PROVIDE 3/4" H&W CW R1/8" OD, 36" A.F.F. PROVIDE 3/4" CW HOSE BIBB, ACORN #8121 W/ VACUUM BREAKER, 48" A.F.F. FOR CHEMICAL CONNECTION.
P3	TANKLESS GAS WATER HEATING SYSTEM. MFG: RINNAI TRX-02CU (3 CU)1999, 358,000 BTU/H (214,000 BTU/H) 7.7 GPM @ 100° RES. SEE PIPING DIAGRAM SHEET P-400 INCLUDE ALL PIPING, VENTING, WALL MOUNTING BRACKET AND ANY ACCESSORIES NECESSARY TO COMPLETE SYSTEM INSTALL. CONTACT: RICO VIGLIETTE, RINNAI AMERICA CORPORATION CORPORATE ACCOUNTS MANAGER (901) 440-7389 JVIGLIETTE@RINNAI.US
CP	HW CIRC. PUMP - MFG: GRUNDFOSS, 15-1885, 1/25 HP, 115 VOLT, 2 GPM @ 7' HEAD OR APPROVED EQUIVALENT.
RD	RD - ROOF DRAIN: J.R. SMITH #0110 CAST IRON ROOF DRAINS WITH FLASHING COLLAR AND CAST IRON DOME. FURNISH EXTENSION (SUFFIX)E FOR INSULATED ROOFS. SUMP RECEIVER (SUFFIX)R FOR UNDER DECK CLAMP (SUFFIX)C FOR ALL BUT POURED-IN-PLACE INSTALLATIONS. OUTLET CONNECTION TYPE SHALL BE COMPATIBLE WITH PIPING SYSTEM.
OD	OD - OVERFLOW ROOF DRAIN: J.R. SMITH #070 WITH SAME FEATURES AS DESCRIBED FOR "ROOF DRAINS". STANDOFFS SHALL BE ADJUSTED TO SECURE SO THAT AFTER THE INSTALLATION OF THE DRAIN ASSEMBLY, THE TOP OF THE STANDOFF SHALL BE 2" ABOVE THE ADJACENT ROOF SURFACE.
40B	FAUCET FOR CHEM: T&S BRASS MODEL 4B-0669-POL. PROVIDED BY G.C.

FIXTURE BRANCH SCHEDULE				
FIXTURE	COLD WATER	HOT WATER	WASTE	VENT
WATER CLOSET (HANDICAPPED)	1/2"	--	4"	2"
LAVATORY	1/2"	1/2"	2"	1 1/2"
2 AND 3 - COMP SINK	1/2"	1/2"	3"	2"
HAND SINK	1/2"	1/2"	2"	1 1/2"
MOP SINK (J.S.)	1/2"	1/2"	3"	2"
EQUIPMENT	1/2"	--	--	--
FLOOR DRAIN/SINK	--	--	2" OR 3"	2"

IN THIS SCHEDULE ARE FURNISHED BY THE OWNER AND INSTALLED BY THE GENERAL CONTRACTOR UNLESS NOTED OTHERWISE AND CONNECTED TO THE PLUMBING UTILITIES BY THE PLUMBING CONTRACTOR, WHO SHALL INSTALL ALL PLUMBING DEVICES FURNISHED WITH EQUIPMENT.

WASTE, FS = FLOOR SINK, CFD = CONDENSATE FLOOR DRAIN, VB = VACUUM BREAKER, FLEX = A SIX FOOT COILED LENGTH OF GOOD QUALITY FLEXIBLE REINFORCED PLASTIC TUBING CONNECTED FROM THE ROUGH IN TO THE EQUIPMENT WITH ALL REQUIRED ADAPTERS AND HOSE CLAMPS.

ALL PIPES MUST MAINTAIN A MINIMUM CLEARANCE OF 6" AFF AND MUST BE WELL SUPPORTED, NO FLOOR SUPPORTS ALLOWED.

(4A) SERVING COUNTER MOUNTED SODA MACHINE: IF PROVIDED, SODA MACHINE INSTALLER TO PROVIDE DRAIN LINES FROM ICE BIN AND SODA MACHINE TO FS WITH 1" AIR GAP. DRAIN LINE TO BE INSULATED. WATER TO SODA MACHINE TO BE PROVIDED THROUGH BUNDLE FROM FILTER AND RACK IN KITCHEN BY SODA MACHINE INSTALLER.

(4AB) BEVERAGE COUNTER MOUNTED SODA MACHINE WITH ICE MACHINE: PROVIDE 3/4" COPPER PIPE IW FROM COUNTER TROUGH DRAIN TO FS WITH 1" AIR GAP. INSULATE WATER TO SODA MACHINE TO BE PROVIDED THROUGH BUNDLE FROM FILTER AND RACK IN KITCHEN BY SODA MACHINE INSTALLER. NO LEGS TO BE INSTALLED. MACHINE TO SET DIRECTLY ON COUNTER.

(4F) WATER FILTER: PROVIDE 3/4" CW AT 96" AFF WITH BV. PROVIDE FLEX AND REDUCED PRESSURE STAINLESS STEEL BACKFLOW PREVENTOR, OR OTHER DEVICE AS REQUIRED BY LOCAL CODE. INSTALL OWNER PROVIDED WATER FILTER AND MAKE CONNECTIONS TO BACKFLOW PREVENTOR AND WATER SUPPLY. PROVIDE ALL REQUIRED FITTINGS TO ALLOW SODA MACHINE INSTALLER TO HOOK UP BOOSTER PUMP TO WATER FILTER. REFER TO DETAIL 15P-500.

(6B) 22"D REAR COUNTER WITH HAND SINK: PROVIDE 3/4" CW AND 8" HW AT 24" AFF AND 8" CW WITH CHROME-PLATED, 3/4" TURN BALL VALVES. CONNECT TO OWNER SUPPLIED FAUCETS WITH METAL FLEX PROVIDE 2" DRAIN PIPE WITH P" TRAP AND WALL MOUNTED CLEAN-OUT. ALL EXPOSED DRAIN PIPES AND FITTINGS TO BE CHROME PLATED, NOT P.V.C.

(9D) ICE TEA MAKER: PROVIDE 3/4" CW AT 24" A.F.F. PROVIDE ALL REQUIRED FITTINGS TO ALLOW ICE TEA INSTALLER TO HOOK UP ONE BV. OTHER BV FOR OTHER EQUIPMENT.

(10J) SODA MACHINE MOUNTED ICE MACHINE: PROVIDE 1/2" CW AT 24" A.F.F. WITH BV. MACHINE ALL REQUIRED FITTINGS TO ALLOW ICE MACHINE INSTALLER TO HOOK UP ICE MACHINE TO CW.

(10L) SELF CONTAINED ICE MACHINE AND BIN: PROVIDE 3/4" CW AT 84" AFF WITH BV. INSTALL PIPES ON WIG WITH 1" STAND OFF. PROVIDE PRESSURE TIE VB OR OTHER BACKFLOW DEVICE AS REQUIRED BY LOCAL CODE. MAKE ALL CONNECTIONS PER DETAIL ON SHEET P-500. PROVIDE 3/4" IW FROM ICE MACHINE CUBER TO FS WITH 1" AIR GAP. DO NOT PROVIDE WATER FILTER FOR ICE MACHINE. PROVIDE 3/4" IW FROM ICE MACHINE BIN TO FS WITH 1" AIR GAP. KEEP ALL LINES AT LEAST 4" ABOVE FLOOR AND DO NOT USE FLOOR SUPPORTS. RE:15P-500

(20A) CHINESE RANGE: PROVIDE 3/4" CW AT 10" AFF WITH BV. PROVIDE PRESSURE TIE VB OR OTHER BACKFLOW DEVICE AS REQUIRED BY LOCAL CODE. AND CONNECT TO OWNER SUPPLIED FAUCETS. PROVIDE 2" COPPER PIPE IW TO FS WITH 2" AIR GAP.

(20B) PROVIDE 1/2" GAS SUPPLY AT 9" AFF WITH EASILY ACCESSIBLE SHUT-OFF VALVE. INSTALL OWNER SUPPLIED GAS REGULATOR AND ADJUST GAS LEVEL TO BURNERS.

(20C) CHINESE RANGE: PROVIDE 3/4" CW AT 10" AFF WITH BV. PROVIDE PRESSURE TIE VB OR OTHER BACKFLOW DEVICE AS REQUIRED BY LOCAL CODE. AND CONNECT TO OWNER SUPPLIED FAUCETS. PROVIDE 2" COPPER PIPE IW TO FS WITH 2" AIR GAP. PROVIDE 1" GAS SUPPLY DOWN TO 9" AFF REDUCE TO 3/4" AT EQUIPMENT CONNECTION WITH EASILY ACCESSIBLE SHUT-OFF VALVE. INSTALL OWNER SUPPLIED GAS REGULATOR AND ADJUST GAS LEVEL TO BURNERS.

(21B) FRYER: PROVIDE 1/2" GAS SUPPLY DOWN TO 14" AFF THEN TRANSITION TO 1" WITH 90° ANGLE AND SHUT OFF VALVE. PROVIDE ALL REQUIRED FITTINGS AND INSTALL OWNER SUPPLIED QUICK DISCONNECT FLEXIBLE PIPE AND CONNECT TO UNITS WITH 90° ANGLE. SEE DETAIL ON P-500

(23E) GRIDDLE: PROVIDE 3/4" GAS SUPPLY DOWN TO 20" AFF WITH EASILY ACCESSIBLE SHUT-OFF VALVE. PROVIDE ALL REQUIRED FITTINGS. CONNECT TO UNIT WITH OWNER SUPPLIED QUICK DISCONNECT (3/4"x48", (1) SWIVEL KIT)

(25A) RICE COOKER: PROVIDE 3/4" GAS SUPPLY AT 30" AND 3/4" GAS SUPPLY AT 10" AFF WITH SHUT OFF VALVES. ONE FOR EACH UNIT. PROVIDE ALL REQUIRED FITTINGS AND INSTALL OWNER SUPPLIED QUICK DISCONNECT FLEXIBLE PIPE AND CONNECT TO UNITS.

(31) WALK-IN COOLER: PROVIDE 1" COPPER PIPE IW FROM DRAIN PAN ON EACH UNIT TO FLOOR DRAIN WITH P" TRAP AND 1" AIR GAP. MOUNT ALL PIPES WITHIN WALK-IN BOX WITH 1" HOLD-OFF SUPPORTS.

(32) WALK-IN FREEZER: PROVIDE 1" COPPER PIPE IW FROM DRAIN PAN ON EACH UNIT TO FLOOR DRAIN WITH P" TRAP AND 1" AIR GAP. MOUNT ALL PIPES WITHIN WALK-IN BOX WITH 1" HOLD-OFF SUPPORTS. PROVIDE HEAT TRACE REFER TO ELECTRICAL DRAWING.

(40A) POT SINK: PROVIDE 3/4" CW AND 8" HW AT 14" AFF AND 8" CW WITH BVS & CV. CONNECT TO OWNER SUPPLIED FAUCET WITH COPPER PIPING. PROVIDE 2" COPPER PIPE IW (MANIFOLD ALL COMPARTMENT DRAINS INTO ONE LINE) TO FS WITH 2" AIR GAP. OR, IF REQUIRED BY LOCAL CODE, INSTALL 2" COPPER PIPE DIRECTLY TO SEWER SYSTEM. INSTALL OWNER SUPPLIED LEVER DRAIN STOPS. SEE DETAIL ON SHEET P-500.

(41B) SINGLE BOWL PREP SINK: PROVIDE 3/4" CW AND 8" HW AT 14" AFF AND 8" CW WITH BVS. CONNECT TO OWNER SUPPLIED FAUCETS WITH COPPER PIPING. PROVIDE 2" COPPER PIPE IW TO FS WITH 2" AIR GAP, OR, IF REQUIRED BY LOCAL CODE, INSTALL 2" COPPER PIPE DIRECTLY TO SEWER SYSTEM. INSTALL OWNER SUPPLIED LEVER DRAIN STOPS.

(41C) SINGLE BOWL PREP SINK: PROVIDE 3/4" CW AND 8" HW AT 14" AFF AND 8" CW WITH BVS. CONNECT TO OWNER SUPPLIED FAUCETS WITH COPPER PIPING. PROVIDE 2" COPPER PIPE IW TO FS WITH 2" AIR GAP, OR, IF REQUIRED BY LOCAL CODE, INSTALL 2" COPPER PIPE DIRECTLY TO SEWER SYSTEM. INSTALL OWNER SUPPLIED LEVER DRAIN STOPS.

(45A) HAND SINK: PROVIDE 3/4" CW AND 8" HW AT 24" AFF AND 8" CW WITH CHROME-PLATED, 3/4" TURN BALL VALVES. CONNECT TO OWNER SUPPLIED FAUCETS WITH METAL FLEX PIPING. PROVIDE 2" DRAIN PIPE WITH P" TRAP AND WALL MOUNTED CLEAN-OUT. ALL EXPOSED DRAIN PIPES AND FITTINGS TO BE CHROME PLATED, NOT P.V.C.

PIPE MATERIAL SCHEDULE		
SERVICE	UNDERGROUND	ABOVE GROUND
COLD & HOT WATER	TYPE "K" OR "L" HARD DRAWN COPPER TUBE	PEX
SANITARY WASTE	*SCH. 40 PVC	*SCH. 40 PVC
SANITARY VENT	*SCH. 40 PVC	*SCH. 40 PVC
GAS	_____	BLACK STEEL, SCHEDULE 40
INDIRECT DRAIN	_____	HARD DRAWN COPPER TUBE TYPE "M"

\*SCH. 40 PVC IS PREFERRED IF APPROVED BY AUTHORITY HAVING JURISDICTION.  
 PROVIDE SCHEDULE 40 PVC FOR ALL WASTE VENT PIPING & FITTINGS.

1. SODA CONDUIT: PROVIDE 6" PVC CONDUIT BELOW FLOOR FROM THE SIDE OF SODA STORAGE RACK TO SODA DISPENSER CONDUIT DETAIL #4 ON SHEET P-500.
2. CONDENSATE: ROUTE SHARED CONDENSATE LINE THROUGH WALK-IN COOLER. DO NOT RUN THROUGH WALK-IN FREEZER. PROVIDE 1" INSULATED CONDENSATE DRAIN PIPE FROM THE EVAPORATIVE COIL. DISCHARGE TO FLOOR SINK OR MOP SINK WITH AIR GAP OF TWICE PIPE DIAMETER. INSTALL AT MINIMUM 7" HEIGHT A.F.F. REFER TO DETAIL #2 ON SHEET P-500.
3. PROVIDE TRAP PRIMER FOR FLOOR SINK. SEE DETAIL 17P-500.
4. RDL & POS. LINES DN. IN WALL. TERMINATE OIL THRU WALL AS CLOSE TO BOTTOM PLATE AS POSSIBLE. EXTEND 1/2" STAINLESS WATER PROOF SEAL ALL AROUND. TERMINATE RDL & OIL WITH 4" PVC LAMB'S TONGUE NOZZLE. COLOR ANTIQUE BRONZE. ARKMAN MODEL #PON-4 (IF AVAILABLE THE RD TO STORM SEWER UNDERGROUND)
5. COMBINATION WASTE/VENT
6. LAV. TAILPIECE WITH TRAP PRIMER, RUN 1/2" CW BELOW FLOOR TO FLOOR DRAIN, SEE DETAIL #9 ON PLAN P-500.
7. (AAV) STUDOR MINI-VENT AIR ADMITTANCE VALVE- INSTALL PER MANUFACTURER'S INSTALLATION INSTRUCTIONS.
8. WYE WITH CLEANOUT ON TOP.

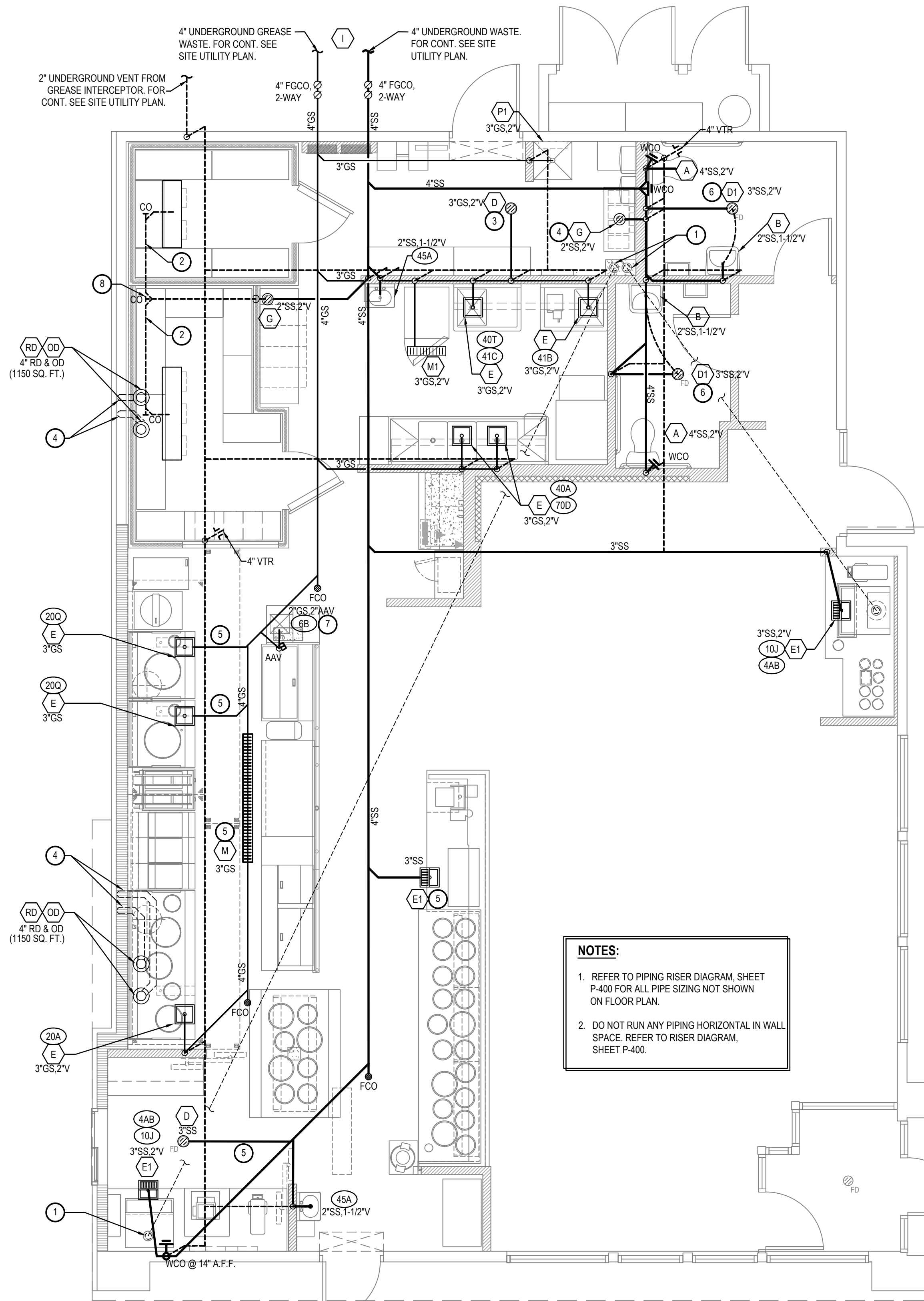
FIXTURE UNIT SCHEDULE						
ITEM	FIXTURE	QTY	WATER FU		SEWER FU	
			EACH	TOTAL	EACH	TOTAL
(A)	WATER CLOSET	2	5	10	4	8
(B)	LAVATORY	2	2	4	1	2
(C)	FLOOR DRAIN 3" TRAP	1	—	—	5	5
(D) (D1)	FLOOR DRAIN 3" TRAP	6	—	—	5	30
(E) (E1)	FLOOR SINK 3" TRAP	10	—	—	5	50
(P1)	MOP SINK	1	3	3	2	2
(G)	FLOOR DRAIN W/ FUNNEL 2" TRAP	2	—	—	3	6
(L) (L1)	HOSE BIBB	3	4	12	—	—
(M) (M1)	TRENCH DRAIN 3" TRAP	2	—	—	5	10
(4F)	FILTER SYSTEM	1	1	1	FS	—
(9D)	ICE TEA BREWER	2	1	2	FS	—
(10J)	400 LB ICE MACHINE	2	1	2	FS	—
(20A)	CHINESE RANGE	1	2	2	FS	—
(20C)	CHINESE RANGE	2	2	4	FS	—
(40A) (40B)	POT SINK (3.COMP.)	1	4	4	FS	—
(41B) (41C)	PREP. SINK (1.COMP.)	2	4	8	FS	—
(45A) (6B)	HAND SINK (WALL MOUNT)	3	2	6	1	3
(40T)	THAWING CABINET	1	-	-	FS	—
(70D)	DISHWASH	1	4	4	FS	—
TOTAL			62		106	

SERVICE	TOTAL F.U.
DOMESTIC WATER	3 62
SANITARY SEWER	106

SERVICE	SIZE MAIN	CAPACITY
DOMESTIC WATER	1-1/2 INCH	32 GPM
SANITARY SEWER	4 INCH	3 106 F.U.
FUEL GAS	3 INCH	2,726 CFH
FIRE PROTECTION	INCH	GPM

A

Model No. 23877		Project Name: Panda Express - Newport News, VA							
<b>Step 1: Flow rate to grease interceptor</b>									
Fluxure Flow Rate: (ou in /231) x gal x UTS / min = 1 min flow rate									
WATER	SINKS	QTY	CU IN	FLOW RATE					
240 - Floor Sink	Floor Sink	N/A	N/A	N/A	4 GPM				
240 - Work Range	Work Range	N/A	N/A	N/A	12 GPM				
220 - Floor Sink	Floor Sink	N/A	N/A	N/A	8 GPM				
200 - Work Range	Work Range	N/A	N/A	N/A	12 GPM				
40 - 3 Comp	3 Compartment Sink	21" x 21" x 14" (3)	1	18,322	60 GPM				
40A - Floor Sink (Dishwasher)	Floor Sink	21" x 21" x 14"	1	6,174	20 GPM				
41B - Prep Sink One Bowl	Prep Sink One Bowl	21" x 21" x 14"	1	6,174	20 GPM				
41C - Prep Sink One Bowl	Prep Sink One Bowl	21" x 21" x 14"	1	6,174	20 GPM				
41D - Floor Sink	Floor Sink	N/A	2	8,000	26 GPM				
68 - Hand Sink	Hand Sink	10" x 14" x 6"	1	700	2.27 GPM				
75A - Dishwasher	Dishwasher (Dishwasher)	N/A	1	5,776	29 GPM				
M1 - Trench Drain	Floor Drain	N/A	N/A	N/A	N/A				
M1 - Trench Drain	Floor Drain	N/A	N/A	N/A	N/A				
P1 - Mop Sink	Mop Basin	24" x 24" x 10"	1	5,700	18.7 GPM				
<b>Total</b>				<b>197.97 GPM</b>					
<b>Flow rate used to size interceptor (less of fixture or pipe size)</b>									
Pipe size (4 in):									
Pipe Size / flow rate per Manning's Formula				<b>150 GPM</b>					
<b>Step 2: Grease Production</b>									
Servings per day x Grease production vol x Days between pump-outs = Grease output									
Number of meals served per day: 500									
Grease production value: 0.035 lbs per serving (Chinese: High / No Fatware)									
Days between pump-outs: 60 days									
<b>500 x 0.035 x 60 = 1050 lbs of FOG</b>									
<b>SCHIER MODEL</b>									
<b>Description:</b> Polyethylene Grease Interceptor									
<b>Dimensions:</b> Length: 87", Width: 33", Height: 44"									
<b>Flow Rates/Grease Capacities:</b> 200 GPM / 1196.0 lbs									
<b>Liquid Capacity:</b> 275 gal									



## Scale: 1/4"=1'-0" | P-101



All ideas, designs, arrangement and plans indicated or represented by this drawing are the property of Panda Express Inc. and were created for use on this specific project. None of these ideas, designs, arrangements or plans may be used by or disclosed to any person, firm, or corporation without the written permission of Panda Express Inc.

2	SOLUTION F.2 09.30.21
3	OWNER REVISIONS 01.27.22

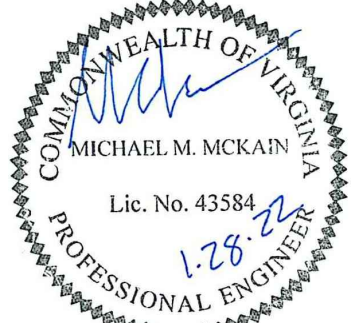
[illegible]

	ISSUE FOR PERMIT	01-29-2
	ISSUE FOR BID	04-30-2
	ISSUE FOR BID 2	11-02-2
	ISSUE FOR BID (DT)	02-04-22

PANDA PROJECT #: D8164

PANDA STORE #: -

ARCH PROJECT #: 261-321



TRUE WARM & WELCOME  
JEFFERSON AVE. & MORRIS DR.  
NEWPORT NEWS, VA 23605

WASTE &amp; VENT PLAN

TRUE WARM &amp; WELCOME 2300 R6