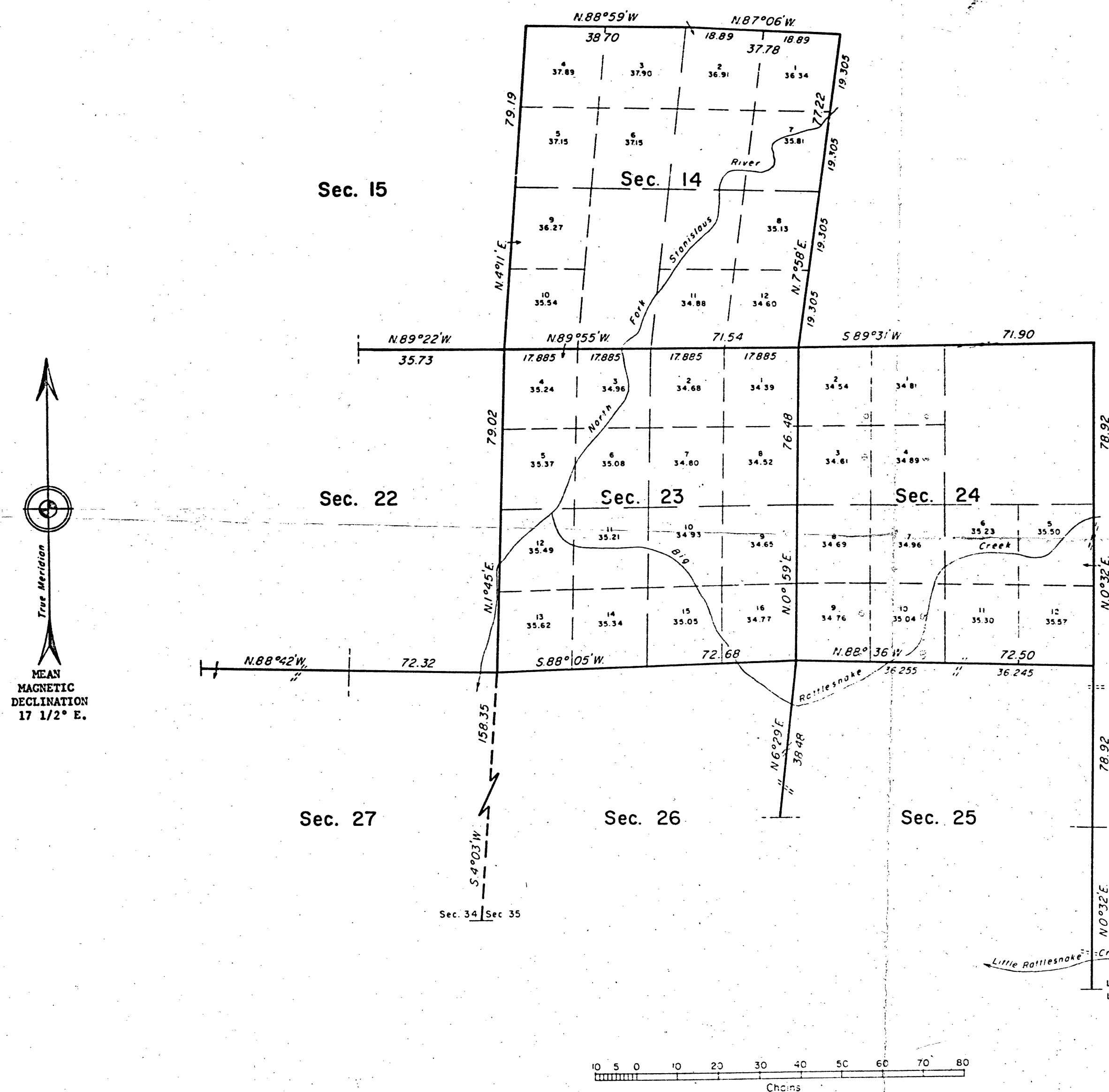


TOWNSHIP 6 NORTH, RANGE 16 EAST, OF THE MOUNT DIABLO MERIDIAN, CALIFORNIA

DEPENDENT RESURVEY



A history of surveys is contained in the field notes.

This plat represents a dependent resurvey of a portion of the east boundary and a portion of the subdivisional lines, designed to restore the corners in their true original locations according to the best available evidence, T. 6 N., R. 16 E., Mount Diablo Meridian, California.

Except as indicated hereon, the lottings and areas are as shown on the plat approved October 2, 1876.

Survey executed by Ronald W. Scherler and Harold W. Heimark, Cadastral Surveyors, beginning April 14, 1975 and completed September 18, 1975, pursuant to Special Instructions dated March 7, 1975, for Group No. 662, California.

UNITED STATES DEPARTMENT OF THE INTERIOR
BUREAU OF LAND MANAGEMENT
Denver, Colorado October 6, 1980

This plat is strictly conformable to the approved field notes, and the survey, having been correctly executed in accordance with the requirements of law and the regulations of this Bureau, is hereby accepted.

For the Director

J. Voorhees

Chief, Cadastral Survey
Examination and Approval Staff