

RANCHO SUTTER CREEK

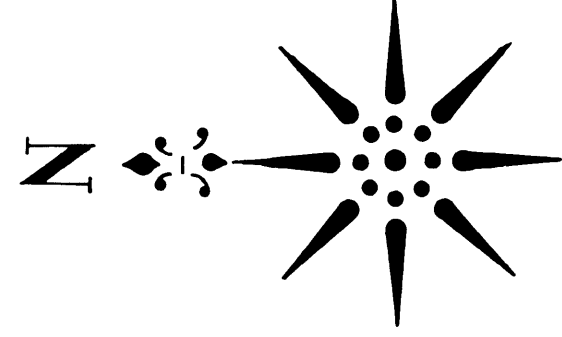
UNIT NO. 1

A PORTION OF SECTIONS 33 & 34
T.7N., R.11E., M.D.B.&M.

AMADOR COUNTY, CALIFORNIA

DECEMBER, 1968 SCALE: 1" = 100'

GREENWOOD & ASSOCIATES - CIVIL ENGINEERS
SACRAMENTO, CALIFORNIA



FD. 2" I.P. SET IN MOUND OF ROCK
PER RECORD OF SURVEY, BK. 7
OF MAPS, PG. 15.

R. 15 BK. 7, PG. 15
(S. 1° 37' E. 2681.22')
(S. 0° 34' 15" E. 2660.88')

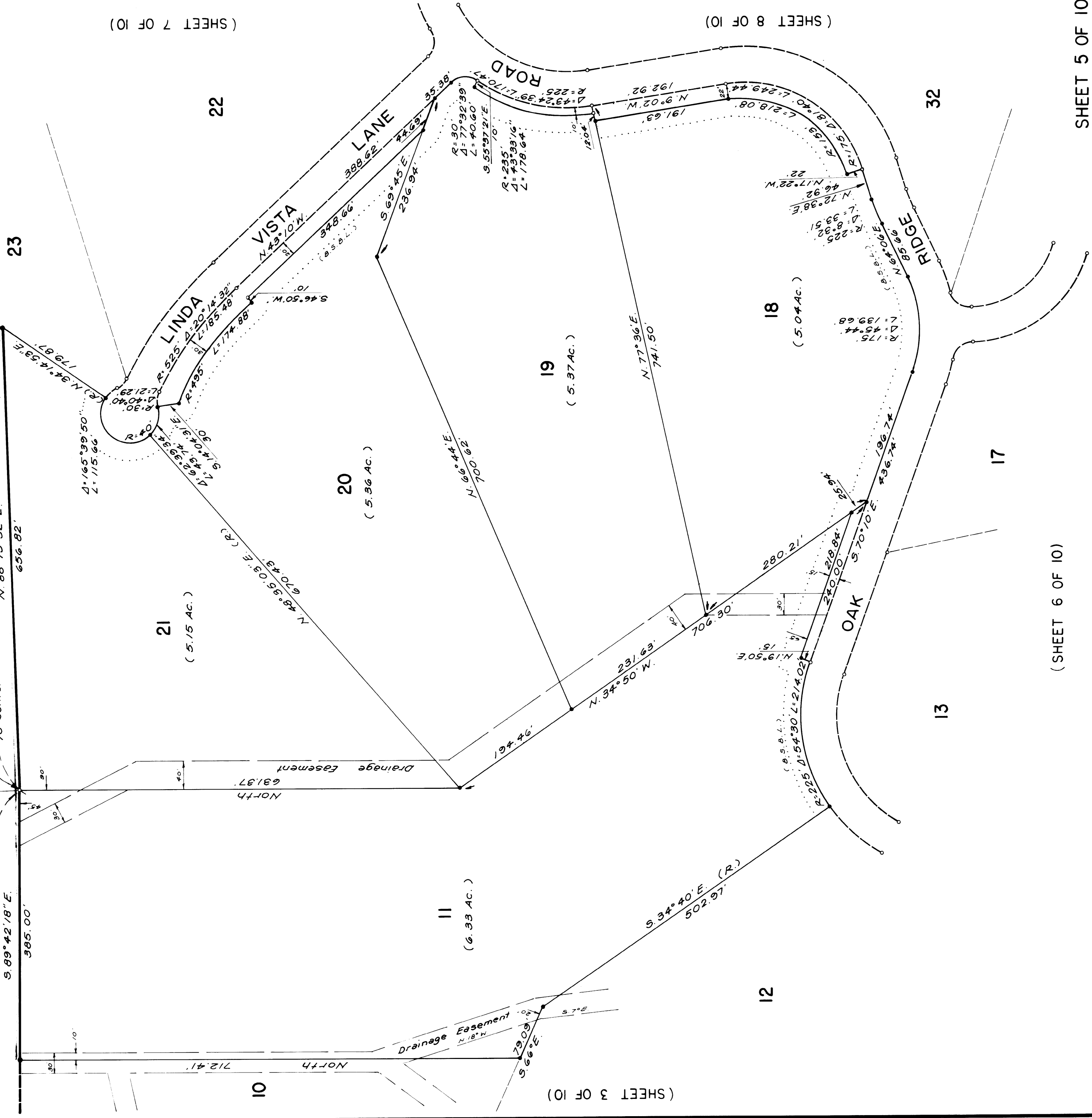
STANLEY C. NICOLAUS
BK. 107, PG. 224
(C. 165° 59' 02" 90" W.)
S. 89° 42' 18" E.

FD. 1" I.P. IN MOUND OF ROCK.
BK. 7 OF MAPS, PG. 15.
W 1/4 COR., SEC. 34
(SET BY L.S. 2603)

To Center 1/4 Cor. Sec. 34, 2627.28',
N. 88° 13' 32" E.

J. E. & GLADYS
BOLDT
BK. 163, PG. 86 & 87

(SEE SHEET 2 OF 10 FOR NOTES AND LEGEND.)



(SHEET 3 OF 10)

(SHEET 7 OF 10)

(SHEET 8 OF 10)

(SHEET 6 OF 10)

SHEET 5 OF 10