

BK 38 Pg 69

CORNER RECORD

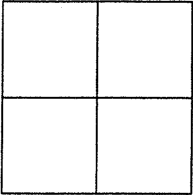
Document Number CR 4325

City of OAKLAND

County of ALAMEDA, California

rief Legal Description BRASS DISC MONUMENT LOCATED WITHIN THE INTERSECTION OF
MACARTHUR BOULEVARD AND 55TH AVENUE. (11/F BM)

13



CORNER RECORD

Government Corner ☐ Control ☒
Meander ☐ Property ☐
Rancho ☐ Other ☐
Date of Survey 10/19/10

COORDINATES
(Optional)

N. _____
E. _____
Zone _____ Datum _____
Elev. _____

Corner — Left as found ☒ Found and tagged ☐ Established ☐ Reestablished ☐ Rebuilt ☐

Identification and type of corner found: Evidence used to identify or procedure used to establish or reestablish the corner:

FOUND BRASS DISC MONUMENT LOCATED WITHIN MACARTHUR BOULEVARD. (11/F BM)

AS SHOWN ON CITY OF OAKLAND MONUMENT MAP, PAGE 137.

13

THIS POINT WAS REFERENCED PRIOR TO A CONSTRUCTION
PROJECT IN THE VICINITY.

A description of the physical condition of the monument as found and as set or reset: _____

FOUND AND SET POINTS AS SHOWN ON PAGE 2.

SURVEYOR'S STATEMENT

This Corner Record was prepared by me or under my direction in conformance with
the Land Surveyors' Act on OCTOBER 19, 2010.

Signed Vincent H. Cunha L.S. Number LS 4520
VINCENT H. CUNHA



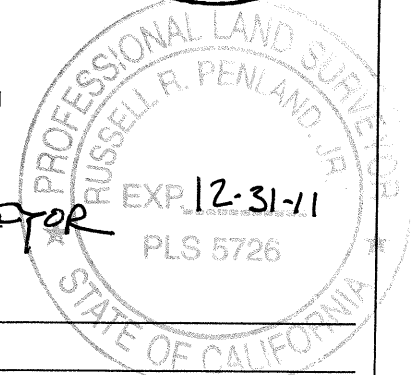
COUNTY SURVEYOR'S STATEMENT

This Corner Record was received 10-22-2010 and examined

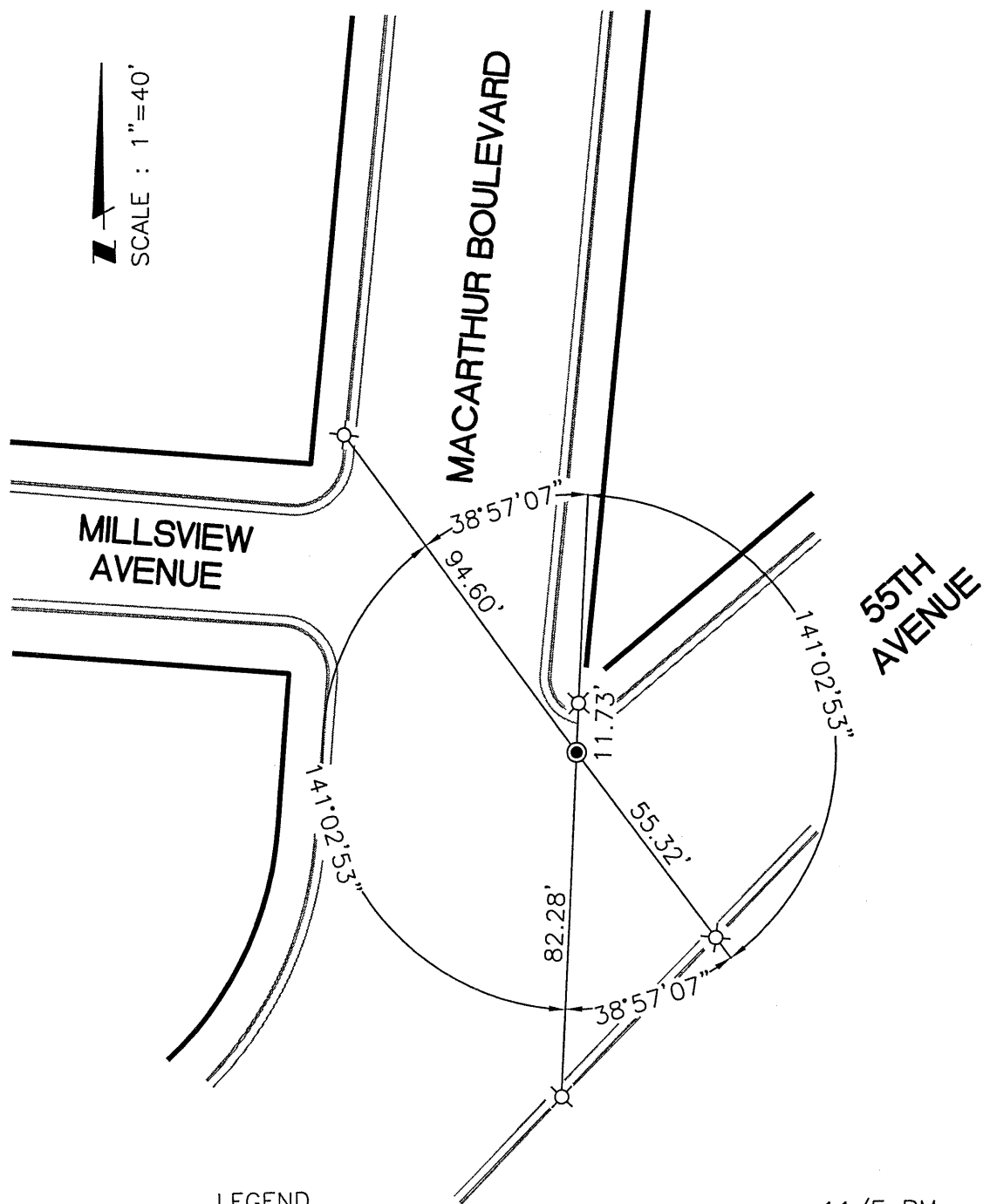
and filed 1-9-2011.

Signed Russell R. Penland Title COUNTY SURVEYOR

County Surveyor's Comment _____



QT96A2



LEGEND

- FOUND BRASS DISC IN MONUMENT WELL
- ✕ SET NAIL AND TAG LS 4520

11/F BM
13