

FILED IN THE OFFICE OF THE COUNTY CLERK OF THE COUNTY OF MONO, STATE OF CALIFORNIA,
THIS 3rd DAY OF July, 1974.

Ann M. Webb
ANN M. WEBB
COUNTY CLERK
COUNTY OF MONO
STATE OF CALIFORNIA

I HEREBY CERTIFY THAT THE WITHIN MAP SHOWING PROPOSED BOUNDARIES OF MONO COUNTY -
JUNE LAKE ASSESSMENT DISTRICT NO. 1, MONO COUNTY, STATE OF CALIFORNIA, WAS APPROVED BY THE
BOARD OF SUPERVISORS OF THE COUNTY OF MONO AT A REGULAR MEETING THEREOF, HELD ON THE
3rd DAY OF July, 1974 BY ITS RESOLUTION NO. 74-64

Ann M. Webb
ANN M. WEBB
COUNTY CLERK
COUNTY OF MONO
STATE OF CALIFORNIA

No. 44

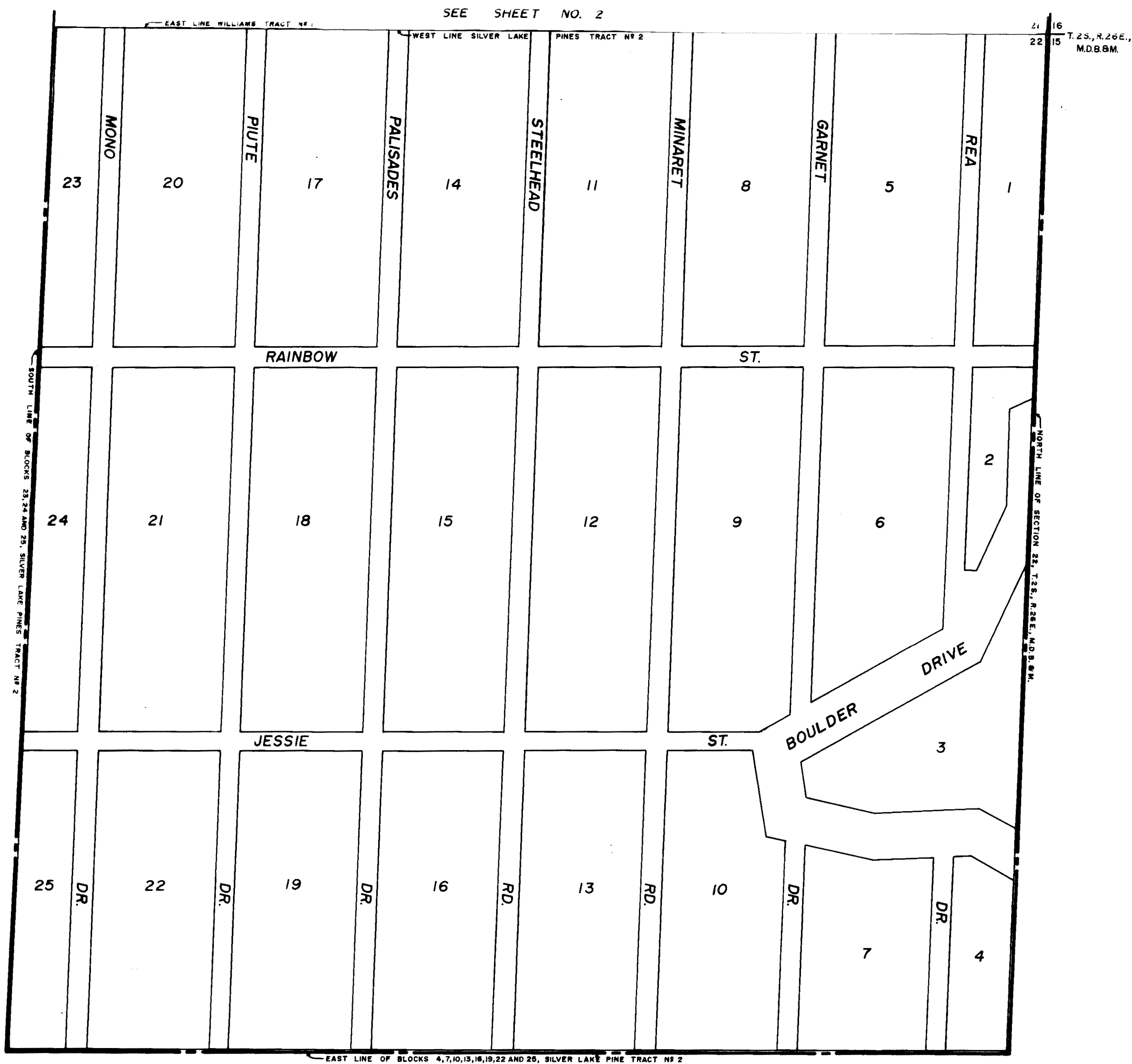
FILED THIS 3rd DAY OF July, 1974, AT THE HOUR OF 11:00 O'CLOCK
A. M. IN BOOK 1, PAGE 174-64 OF MAPS OF ASSESSMENT DISTRICTS IN THE
OFFICE OF THE COUNTY RECORDER OF THE COUNTY OF MONO, STATE OF CALIFORNIA.

Ann M. Webb
ANN M. WEBB
COUNTY RECORDER
COUNTY OF MONO
STATE OF CALIFORNIA



LEGEND

--- ASSESSMENT DISTRICT BOUNDARY
20 BLOCK NUMBER
2 LOT NUMBER



PROPOSED BOUNDARIES OF
MONO COUNTY - JUNE LAKE ASSESSMENT DISTRICT NO. 1
SANITARY SEWERAGE PROJECT
MONO COUNTY, CALIFORNIA

GRAM/PHILLIPS ASSOCIATES, INC.
MAMMOTH LAKES, CALIFORNIA
Date: June, 1974

Sheet: 1 of 2

STONE & YOUNGBERG
MUNICIPAL FINANCING CONSULTANTS, INC.
SAN FRANCISCO, CALIFORNIA

ASSESSMENT BOOK Vol. 1, Pg. 4